

Xerox® Supplies
and Specialty Media
Product Portfolio



Xerox® Supplies

Your Online Catalog for all
Your Printing Needs





Introduction

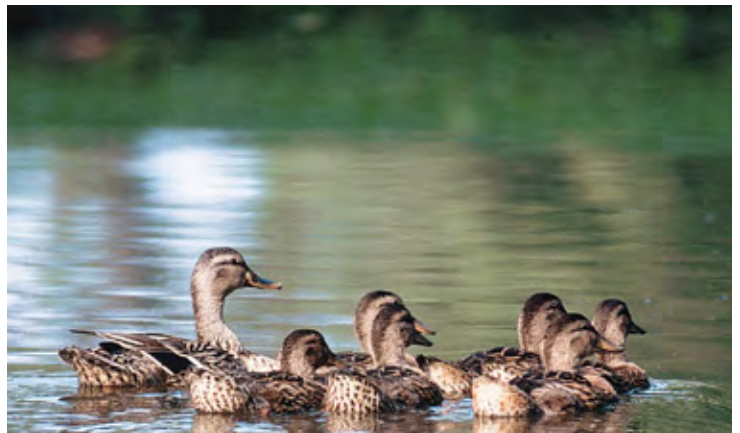
Xerox® Supplies Product Portfolio: Quality, Reliability, Variety and Performance—

helping you work greener and smarter. Xerox® Supplies is as committed to protecting the environment as we are in offering you the widest portfolio of Digitally Optimized Paper and Specialty Media. Our range of options includes papers that are FSC® Certified and SFI Certified, so you can be sure you're preserving the planet while you're improving your document quality, your output and your bottom line.

Xerox® supplies are engineered to bring out the best in digital printing. Whether you need to create a high-end customer brochure, a captivating proposal or presentation, an eye-catching business card, poster, pamphlet or window decal, you get results with Xerox® Digitally Optimized Paper and Specialty Media. All of our products have been designed, extensively tested and qualified by Xerox engineers to ensure optimum performance and outstanding productivity.

There's never been a better time to take advantage of the explosive growth of digital print. No matter what kind of business you are in, we have innovative, money-making or money-saving solutions that get results:

- **Shorter run lengths**
- **Faster turnaround times**
- **Personalized content**
- **Performance guaranteed**



Certification and Sustainability

Starting with the source of the fiber used to make the paper, through its manufacture and use, we strive to minimize environmental impact while meeting your exacting business needs.

In 2000, we adopted an environmental position on sourcing paper. The position states that our goal is to source paper from companies committed to sound environment, health and safety practices and sound environmental management. In support of this position, we phased in a set of requirements from 2003 to 2005 for all supplying mills. These stringent requirements cover all aspects of papermaking, from forest management to production of finished goods.

The requirements are now included in our supplier qualification process, and our existing paper suppliers worldwide must meet these requirements to continue doing business with us. Suppliers must also submit detailed documentation annually, verifying conformance.

Key elements required:

- Commitment to compliance with all applicable environment, health and safety regulatory requirements, including forestry codes of practice and regulations governing legal harvesting of wood.
- An effective mill environmental management system and objectives for continual improvement in environmental performance above and beyond regulatory compliance.



An effective procurement process that:

- Ensures the exclusion of illegally harvested wood raw materials.
- Ensures the exclusion of wood raw materials derived from forest areas of significant ecological or cultural importance, unless certified to our accepted sustainable forest management standards.
- Encourages all suppliers of wood raw materials to practice sustainable forest management.
- Strictly limits the use of hazardous materials, including exclusion of elemental chlorine, in the processing and content of our papers.

These standards enabled us to gain certification by other outside independent groups to ensure that our papers not only meet our high standards, but meet the requirements of these cross-industry governing bodies.

In 2007, we were one of the first paper providers to be awarded multi-site certification of all of our paper sales and distribution sites across Europe and North America. Certification is the right thing to do. It ensures that our standards are as high as the industry experts. It gives you the extra assurance that our papers meet the standards of international standards groups. Additionally, there is the assurance that from the forest to your hands—the paper has been handled responsibly throughout the Chain of Custody. Forests are managed responsibly: trees are regenerated, wildlife habitats protected, and biodiversity of forestland is respected and maintained. Since only about 7% of the world's forests are certified, the pulp from these forests can be difficult to source. But, we are committed to the assurance that whether the paper is certified, recycled or from non-certified virgin pulp, the highest standards are maintained to protect our natural resources.

Understanding Paper Certifications

Chain of Custody

Chain of Custody (CoC) is the path taken by the raw materials harvested from a certified forest all the way through processing, production, distribution and printing until it is a final product to be sold to an end customer.

We are proud to have earned the following CoC certifications:

Programme for the Endorsement of Forest Certification

The Programme for the Endorsement of Forest Certification (PEFC) Council is an independent, non-profit, non-governmental organization, founded in 1999, which promotes sustainably managed forests through independent third party certification. PEFC provides an assurance mechanism to purchasers of wood and paper products that they are promoting the sustainable management of forests.

PEFC is similar to FSC® in relation to the end product certification, and is growing in popularity across some regions of Western Europe. PEFC offers customers a badge of sustainability as requested by many end users, as proof of corporately responsible purchasing.



Forest Stewardship Council™

The Forest Stewardship Council (FSC® Certified) is an international network, which promotes responsible management of the world's forests. The FSC® accredits independent third-party organizations such as certification bodies. These certification bodies certify organizations to the FSC® standards. Its trademark provides international recognition to organizations that support the growth of responsible forest management.

Over the past 12 years, over 157 million hectares in 80 countries have been certified according to FSC® standards, while several thousands of products are produced using FSC® Certified wood and carrying the FSC® trademark. FSC® operates through its network of National Initiatives and is becoming increasingly demanded by customers looking for a sustainable branded paper.

The FSC® trademark can be displayed on products containing a mix of FSC®, recycled and other responsible sources. The FSC® logo identifies products from well managed forests. It is the global benchmark for responsible forest management.

Please look for FSC® Certified products.



The mark of responsible forestry

The Sustainable Forestry Initiative

The Sustainable Forestry Initiative® (SFI) program is based on the premise that responsible environmental behavior and sound business decisions can co-exist. SFI program participants practice sustainable forestry on all the lands they manage and they influence millions of additional acres through the training of loggers and foresters in best management practices and landowner outreach programs. This unique commitment to sustainable forestry recognizes that all forest landowners, not just SFI program participants, play a critical role in ensuring the long-term health and sustainability of our forests. The SFI program is overseen by a multi-stakeholder Board of Directors, which is the sole governing body over the SFI Standard and all aspects of the program, including chain of custody certification and labeling, marketing and promotion.



Contents

8 Coated Papers

- 8 Digital Color Elite Gloss®
- 8 Digital Color Elite Silk®
- 9 Digital Color Select Gloss®
- 9 Digital Color Impressions™ Gloss
- 10 Digital Color Impressions™ Satin
- 10 Digital Color Super Gloss

11 Uncoated Papers

- 11 Color Xpressions® Elite
- 11 Color Xpressions® Select
- 12 Color Xpressions® Planet 20
- 12 Color Xpressions® Planet 100
- 13 Business Index
- 13 Digital Publishing Paper

14 Environmental Papers

- 14 FSC® Certified Business 4200
- 14 Business Recycled
- 14 100% Recycled Bond Paper

15 Multipurpose Papers

- 15 Business 4200
- 15 Multipurpose
- 16 Business 4200 Xpress
- 16 Multipurpose Pastels

17 Multipurpose Perforated and Punched Papers

- 17 Business 4200 Perforated Paper
- 17 Business 4200 Punched Paper
- 18 Business 4200 Security/Checkstock
- 18 Business 4200 Ring Tuff®

19 Laser and Inkjet Papers

- 19 Image Series
- 19 Premium Laser
- 19 Premium Inkjet

20 Carbonless Papers

- 20 Xerox Premium Digital Carbonless® Paper
- 21 Universal Carbonless Paper
- 21 Padding Adhesive

22 Digital Synthetic Papers

- 22 Premium Never Tear
- 23 Specialty Premium Never Tear
- 24 DuraPaper®

25 Premium Digital 1 Up Labels

- 25 Premium Never Tear 1 Up Labels
- 25 Vinyl 1 Up Labels

26 Photo Applications Paper

- 26 Xerox® EverFlat Image Solutions Paper®
- 26 PhotoPix
- 27 AccordionPix®
- 27 SportsPix®
- 27 FunFlip®

28 Tabs and Dividers

- 28 Multipurpose Plain Tabs
- 29 Multipurpose Plastic Tabs
- 29 Digital Color Plastic Printable Tabs
- 30 Planet 30 Recycled Tabs
- 30 Xpressions+ Tabs

31 Labels

- 31 Digital Color Select Gloss® Labels
- 32 Digital Color Xpressions® Matte Labels
- 32 Plain Paper Labels

33 Transparencies

- 33 Transparencies

34 Specialty Media

- 34 Digital Color Tri-fold Brochures
- 35 Transfer Paper
- 35 Business Reply Envelopes

36 Presentation Supplies

- 36 High Gloss Folders
- 37 Document Folders 2 Pocket

38 Binding Supplies

- 38 Production Binder Covers
- 38 Antique Covers
- 39 Print On Demand Covers
- 39 Hard Covers
- 40 Document Binder 120 Covers

41 Phaser® Color Printer Media

41 Phaser Color Printer Media

42 Custom Solutions and Applications

42 ID Card Solutions

42 Impression Solutions

42 Tab and Folder Solutions

42 Mail Solutions

42 Pressure Sensitive Solutions

42 Durable Paper Solutions

44 Wide Format

44 Premium Bond

45 Performance Bond

46 24 lb Performance Bond

46 20 lb Performance Recycled Bond

47 Translucent Bond

47 20 lb Performance Vellum

48 20 lb Production Vellum

48 Accu-Image Elite Plus Film

49 Xerox® Wide Format Supplies
(Consumables)

50 Inkjet Consumables

52 Miscellaneous Consumables

53 Check Plot Inkjet Bond

53 Translucent Inkjet Bond

54 4 Mil Double Matte Erasable
Inkjet Film

55 Premium Coated Inkjet Bond

57 Matte Presentation Paper
160 g/m²

58 Premium Presentation Paper
170 g/m²

58 Universal Photo Paper Satin
170 g/m²

59 Universal Photo Paper 195 g/m²

60 Self-Adhesive Universal Photo
Paper 170 g/m²

60 Universal Photo Paper 220 g/m²

61 Banner Polyester 290 mic

61 Banner Vinyl 400 g/m²

62 Universal Artist Canvas 340 g/m²

62 Standard Satin Outdoor Papers
140 g/m²

63 Premium Satin Outdoor Papers
200 g/m²

63 Gloss Self-Adhesive Vinyl
(permanent adhesive)
80 and 100 mics

64 Matte Self-Adhesive Vinyl
(removable adhesive) 100 mics

64 Banner Vinyl 13 oz/yd²

65 Heavy-Duty Banner Vinyl 13 oz/yd²

66 Equipment Supplies/ Consumables

69 Supplies Return Policy Overview

70 Supplies/Consumables Reorder Numbers

70 Black and Color Toner

76 Developer Supplies

77 Cartridge Supplies

78 Fuser Supplies

79 Binder Supplies

80 Staple and Stitcher Supplies

82 Cleaning Agents and
Miscellaneous Supplies

83 Phaser® Equipment Supplies

94 Laser Printer Toner Cartridges

94 Color HP Printer Replacement
Toner Supplies

97 Black HP, Apple Printer
Replacement Toner Supplies

98 Brother Laser Printer Replacement
Toner and Drum Cartridges

99 Lexmark Laser Printer Replacement
Cartridges

100 Reprographic Media Performance Chart

Coated Papers

Digital Color Elite Gloss®

With our specially formulated coating on both sides of the sheet and increased brightness, you'll be able to create high-end, glossy duplex applications. Our digitally optimized paper delivers best-in-class toner adhesion, superior image quality and reliability. The Digital Color Elite Gloss family now includes 130 lb Cover, the heaviest digital coated cover available in the market. Please look for FSC® Certified products.



94 Bright

76 Gloss



Weight	8.5x11	Sht/Ctn	17x11*	Sht/Ctn	18x12*	Sht/Ctn	19x13*	Sht/Ctn	20.5x14.33*	Sht/Ctn
80 lb Text (120 g/m ²)	3R11450	3,000	3R11451	1,500	3R11452	1,500			3R11453	1,000
100 lb Text (140 g/m ²)	3R11454	2,400	3R11455	1,200	3R11456	1,200			3R11457	750
80 lb Cover (210 g/m ²)	3R11458	2,000	3R11459	1,000	3R11460	750			3R11461	500
100 lb Cover (280 g/m ²)	3R11462	1,500	3R11463	750	3R11464	750			3R11465	500
110 lb Cover (300 g/m ²)	3R11466	1,200	3R11467	600	3R11468	600			3R11469	400
130 lb Cover (350 g/m ²)					3R11448	400	3R11449	400		

*Short Grain

Digital Color Elite Silk®

With our specially formulated coating on both sides of the sheet and increased brightness, you'll be able to create high-end duplex applications. This smooth, low-gloss coated paper has a distinctive rich silky feel with the best-in-class toner adhesion, superior image quality and reliability. The Digital Color Elite Silk family now includes 130 lb Cover, the heaviest digital coated cover available in the market. Please look for FSC® Certified products.



94 Bright

35 Gloss



Description	8.5x11	Sht/Ctn	17x11*	Sht/Ctn	18x12*	Sht/Ctn	19x13*	Sht/Ctn	20.5x14.33*	Sht/Ctn
80 lb Text (120 g/m ²)	3R11470	3,000	3R11471	1,500	3R11472	1,500			3R11473	1,000
100 lb Text (140 g/m ²)	3R11474	2,400	3R11475	1,200	3R11476	1,200			3R11477	750
80 lb Cover (210 g/m ²)	3R11478	2,000	3R11479	1,000	3R11480	750			3R11481	500
100 lb Cover (280 g/m ²)	3R11482	1,500	3R11483	750	3R11484	750			3R11485	500
110 lb Cover (300 g/m ²)	3R11486	1,200	3R11487	600	3R11488	600			3R11489	400
130 lb Cover (350 g/m ²)					3R11495	400	3R11494	400		

* Short Grain

Coated Papers

Digital Color Select Gloss®

Using the same special coating formulation, you'll have the same great performance and the option of a lower brightness. Our digitally optimized coated paper delivers the best-in-class toner adhesion, superior image quality and reliability. Please look for FSC® Certified products.



90 Bright

70 Gloss



Weight	17x11	Sht/Ctn	18x12	Sht/Ctn	20.5x14.33	Sht/Ctn
80 lb Text (120 g/m ²)	3R11503*	1,500	3R11504*	1,500		
100 lb Text (140 g/m ²)	3R11510*	1,200	3R11511*	1,200	3R11512*	750
80 lb Cover (210 g/m ²)	3R11506*	1,000	3R11507*	750		
100 lb Cover (280 g/m ²)	3R11513*	750	3R11514*	750	3R11515*	500

*Short Grain

Digital Color Impressions™ Gloss

An economical sheet that delivers superior results. Designed to provide excellent toner adhesion and image quality. This digitally optimized sheet is the perfect choice for all of your everyday applications. Please look for FSC® Certified products.



90 Bright

65 Gloss



Description	17x11	Sht/Ctn	18x12	Sht/Ctn	19x13	Sht/Ctn	20.5x14.33	Sht/Ctn	26x14.33	Sht/Ctn
80 lb Text (118 g/m ²)	3R11875	2,000	3R11876	1,500	3R11877	1,500	3R11878	1,200	3R11879	1,000
100 lb Text (148 g/m ²)	3R11880	1,500	3R11881	1,500	3R11882	1,000	3R11883	1,000	3R11884	800
80 lb Cover (216 g/m ²)	3R11885*	1,000	3R11886*	1,000	3R11887*	750	3R11888*	750	3R11889*	500
100 lb Cover (270 g/m ²)	3R11890*	750	3R11891*	750	3R11892*	600	3R11893*	500	3R11894*	400

*Short Grain

Coated Papers

Digital Color Impressions™ Satin

An economical sheet that delivers superior results. Designed to provide excellent toner adhesion and image quality. This digitally optimized sheet is the perfect choice for all of your everyday applications. Please look for FSC® Certified products.



90 Bright

30 Gloss



Description	17x11	Sht/Ctn	18x12	Sht/Ctn	19x13	Sht/Ctn	20.5x14.33	Sht/Ctn	26x14.33	Sht/Ctn
80 lb Text (118 g/m ²)	3R11690	1,500	3R11691	1,500	3R11692	1,500	3R11693	1,000	3R11694	1,000
100 lb Text (148 g/m ²)	3R11695	1,200	3R11696	1,200	3R11697	1,200	3R11698	800	3R11699	800
80 lb Cover (216 g/m ²)	3R11855*	750	3R11856*	750	3R11857*	750	3R11858*	500	3R11859*	500
100 lb Cover (270 g/m ²)	3R11860*	750	3R11861*	750	3R11862*	600	3R11863*	400	3R11864*	400

*Short Grain

Digital Color Super Gloss

Cast-coated, one sided cover provides outstanding color reproduction with a high-gloss finish for your most demanding applications. A perfect solution for postcards, posters or cover applications that will get attention. Please look for FSC® Certified products.



92 Bright

90 Gloss



Description	8.5x11	Sht/Ctn	17x11	Sht/Ctn	18x12	Sht/Ctn
8 pt (170 g/m ²)	3R11680	1,250	3R11681*	1,250	3R11682*	1,250
10 pt (219 g/m ²)	3R11683	1,000	3R11684*	1,000	3R11685*	1,000
12 pt (247 g/m ²)	3R11686	800	3R11687*	800	3R11688*	800

*Short Grain

Uncoated Papers

Color Xpressions® Elite

The perfect paper for all of your color printing applications that also provides the environmental benefit of FSC® Certification. Our brightest uncoated digital printing paper with new 100 brightness and a blue-white shade for improved color applications. It's engineered and optimized for digital printing and yields rich, crisp color with outstanding contrast for everyday office color copying and printing applications. Please look for FSC® Certified products.



100 Bright



Weight	8.5x11	Sht/Ctn	8.5x11 3HD	Sht/Ctn	17x11*	Sht/Ctn	18x12*	Sht/Ctn	20.5x14.33*	Sht/Ctn
28/70 lb Bond/Text (105 g/m ²)	3R11760	4,000	3R11761	4,000	3R11762	2,000	3R11763	2,000	3R11777	1,500
32/80 lb Bond/Text (120 g/m ²)	3R11764	4,000			3R11765	2,000	3R11766	2,000		
60 lb Cover (163 g/m ²)	3R11767	2,500			3R11768	1,250	3R11769	1,250		
80 lb Cover (216 g/m ²)	3R11770	2,000			3R11771	1,000	3R11772	1,000	3R11773	750
100 lb Cover (280 g/m ²)	3R11774	1,500			3R11775	750	3R11776	750		

*Short Grain

Color Xpressions® Select

One of the brightest uncoated papers. Digitally optimized for both production and everyday office color copying and printing applications delivering premium color contrast and clear, crisp images.



98 Bright



Weight	8.5x11	Sht/Ctn	8.5x11 3HD	Sht/Ctn	8.5x14	Sht/Ctn	11x17	Sht/Ctn
24/60 lb Bond/Text (90 g/m ²)	3R11540	5,000	3R11541	5,000	3R11542	4,000	3R11543	2,500

Uncoated Papers

Color Xpressions® Planet 20

 **Contains 20% Post Consumer Recycled Content**

Make an impression with a paper that is manufactured with 20% PCW and FSC® Certified. An environmentally responsible choice for digital color printing. With a true white shade, Xerox® Color Xpressions Planet 20 is ideal for high-end graphic art creations including skin-tone reproduction. The ultra-smooth surface allows for toner to sit up on the page—producing superior image quality documents. It offers the flexibility and superior performance for both digital and offset environments. Please look for FSC® Certified products.



98 Bright



Description	8.5x11	Sht/Ctn	17x11*	Sht/Ctn	18x12*	Sht/Ctn
28/70 lb Bond/Text (105 g/m ²)	3R11800	4,000	3R11801	2,000	3R11802	2,000
65 lb Cover (176 g/m ²)	3R11803	2,500	3R11804	1,250	3R11805	1,250
80 lb Cover (216 g/m ²)	3R11806	2,000	3R11807	1,000	3R11808	1,000
100 lb Cover (280 g/m ²)†	3R11809	1,500	3R11810	750	3R11811	750

*Short Grain

Color Xpressions® Planet 100

 **Contains 100% Post Consumer Recycled Content**

Made with 100% post consumer recycled fiber and FSC® Certified, this is the uncoated environmentally responsible choice for digital color printing. At 96 brightness, this paper will provide high performance and an ultra-smooth surface to produce superior image quality documents. Outstanding visual quality and print performance that is digitally optimized for a wide variety of color printing applications. Please look for FSC® Certified products.



96 Bright



Weight	8.5x11	Sht/Ctn
28/70 lb Bond/Text (105 g/m ²)	3R11815	4,000

Uncoated Papers

Business Index

Tested for dependability and reliability to save you time and money with less equipment downtime, fewer service calls and greater productivity. Bright white Index is perfect for cards, scrapbooks, flyers, business cards and report covers.



96 Bright



Weight	8.5x11	Sht/Ctn	17x11*	Sht/Ctn
90 lb Index (163 g/m ²)	3R11747	2,000	3R11748	1,000
110 lb Index (199 g/m ²)	3R11749	2,000		

*Short Grain

Digital Publishing Paper

This family of papers features high opacity as well as high brightness for fine text, lines and halftones with premium image contrast and minimal show-through.

96 Bright



Weight	8.5x11	Sht/Ctn
20/50 lb Bond/Text (75 g/m ²)	3R11753	5,000
24/60 lb Bond/Text (90 g/m ²)	3R11755	4,000

Environmental Papers

FSC® Certified Business 4200

A truly versatile FSC® Certified paper for everyday use. Performance guaranteed for all types of documents. The industry standard for low- and high-volume printers, copiers, inkjet and laser printers, plain paper fax machines and offset printing presses is now available in a FSC® Certified version.

Dependability, reliability, less equipment downtime, greater productivity and environmentally friendly. Please look for FSC® Certified products.



92 Bright



Description	8.5x11	Sht/Ctn
20 lb Bond (75 g/m ²)	3R11750	5,000

Business Recycled

Contains 30% Post Consumer Recycled Content

The same 99.99% jam-free performance guarantee as Xerox® Business 4200, but includes 30% post consumer fiber. Xerox® recycled papers are designed for optimal performance and are required to meet Xerox's toughest performance and reliability specifications.



92 Bright



Weight	8.5x11	Sht/Ctn	8.5x11 3HD	Sht/Ctn	8.5x14	Sht/Ctn	11x17	Sht/Ctn
20 lb Bond (75 g/m ²)	3R6296	5,000	3R6297	5,000	3R6298	5,000	3R6299	2,500

100% Recycled Bond Paper

Contains 100% Post Consumer Recycled Content

100% Recycled Bond offers the Xerox quality, reliability and performance in laser, inkjet, copier and fax machines. Meets or exceeds stringent government criteria for post consumer waste. It is a reliable paper tested on thousands of sheets to minimize contamination. De-inked without using chlorine or chlorine compounds, acid free and backed by the toughest industry standards to guarantee you the most consistent quality. Ideal for applications such as letters, memos and direct mail.



92 Bright



Weight	8.5x11	Sht/Ctn
20 lb Bond (75 g/m ²)	3R11376	5,000

Multipurpose Papers

Business 4200

This 92 bright paper for everyday documents provides 99.99% jam-free operation. Our workhorse everyday white paper is tested for dependability and reliability, saving you time and money with less equipment downtime, fewer service calls and greater productivity.



92 Bright



Description	8.5x11	Sht/Ctn	8.5x11 3HD	Sht/Ctn	A4	Sht/Ctn	8.5x14	Sht/Ctn	11x17	Sht/Ctn
20 lb Bond/Text (75 g/m ²)	3R2047	5,000	3R2641	5,000	3R2594	2,500	3R2051	5,000	3R3761	2,500
24/60 lb Bond/Text (90 g/m ²)	3R2531	5,000	3R3317	5,000					3R3871	2,500
28/70 lb Bond/Text (105 g/m ²)	3R2353	3,000							3R3873	1,500

Multipurpose

The industry standard for professional looking office documents. The higher brightness and blue white shade help you create documents with lasting impact. Designed for both color and black and white office documents, from desktop to high volume. Ideal for presentations, reports and manuals.



96 Bright

Description	8.5x11	Sht/Ctn
20 lb Bond/Text (75 g/m ²)	3R11029	5,000

Multipurpose Papers

Business 4200 Xpress

New Carton Design

Business 4200 Xpress cartons are specially designed to be lightweight and moisture proof. Ergonomically designed for easier lifting, moving and loading into your high-volume printer or copier. Environmentally and productivity friendly system without ream wrap to dispose of.



92 Bright



Weight	8.5x11	Sht/Ctn	8.5 x 11 3HD	Sht/Ctn
20/50 lb Bond/Text (75 g/m ²)	3R11415	2,500	3R11416	2,500
24/60 lb Bond/Text (90 g/m ²)	3R11414	2,000		

Multipurpose Pastels

 Contains 30% Post Consumer Recycled Content

Add color to your black and white documents by using Xerox® Multipurpose Pastel papers. Same great digitally optimized performance now available in a range of pastel colors, sizes and weights with 30% post consumer waste content.



Description	Color	8.5x11	Sht/Ctn	8.5x11 3HD	Sht/Ctn	11x17	Sht/Ctn
20 lb Bond/Text (75 g/m ²)	Blue	3R11050	5,000	3R11062	5,000	3R11086	2,500
20 lb Bond/Text (75 g/m ²)	Yellow	3R11053	5,000	3R11065	5,000	3R11089	2,500
20 lb Bond/Text (75 g/m ²)	Green	3R11051	5,000	3R11063	5,000	3R11087	2,500
20 lb Bond/Text (75 g/m ²)	Pink	3R11052	5,000	3R11064	5,000	3R11088	2,500
20 lb Bond/Text (75 g/m ²)	Buff	3R11054	5,000				
20 lb Bond/Text (75 g/m ²)	Goldenrod	3R11055	5,000				
20 lb Bond/Text (75 g/m ²)	Ivory	3R11056	5,000			3R11090	2,500
20 lb Bond/Text (75 g/m ²)	Gray	3R11057	5,000				
20 lb Bond/Text (75 g/m ²)	Cherry	3R11060	5,000				
20 lb Bond/Text (75 g/m ²)	Salmon	3R11058	5,000				
20 lb Bond/Text (75 g/m ²)	Lilac	3R11059	5,000				
20 lb Bond/Text (75 g/m ²)	Tan	3R11061	5,000				

Multipurpose Perforated and Punched Papers

Business 4200 Perforated Paper

Match your requirements perfectly with a wide selection of Xerox® vertical or horizontal perforated papers. Fifty-two vacuumed and pressed micro perforated lines per inch generate a smooth, clean edge, ensuring compatibility with printers and copiers.



92 Bright

Description	8.5x11	Sht/Ctn	9x11	Sht/Ctn
20 lb (75 g/m ²) – Vertical, 0.5" from left	3R4175	5,000	3R4160†	5,000
20 lb (75 g/m ²) – Horizontal, 3.5" from bottom	3R5125†	5,000		
20 lb (75 g/m ²) – Horizontal, 3.67" from bottom	3R5126†	5,000		
20 lb (75 g/m ²) – Horizontal, 5.5" from bottom	3R12166†	2,500		
24 lb (90 g/m ²) – Horizontal, 3.5" from bottom	3R4900	5,000		
24 lb (90 g/m ²) – Horizontal, 3.67" from bottom	3R4901†	5,000		
24 lb (90 g/m ²) – Horizontal, 3.67" from top, 3.67" from bottom	3R5820†	5,000		

†Not available in Canada.

Business 4200 Punched Paper

Xerox offers punched paper to fit all popular binder styles including GBC (19 HD), VeloBind (11 HD) and Spiral (44 HD). Our quality-controlled punch eliminates paper deformation around the holes and loose punches in the ream, keeping the pages flowing smoothly. Specifically designed to increase machine uptime and productivity.

92 Bright

Description	8.5x11	Sht/Ctn
20 lb (75 g/m ²) – Short Edge 2-Hole Punch	3R12163†	2,500
20 lb (75 g/m ²) – Short Edge 5-Hole Punch	3R12164†	2,500
20 lb (75 g/m ²) – Long Edge 5-Hole Punch	3R12165†	2,500
20 lb (75 g/m ²) – 19-Hole GBC, 0.125" Offset	3R4904	5,000
20 lb (75 g/m ²) – 19-Hole GBC, 0.100" Offset	3R4905	5,000
20 lb (75 g/m ²) – Punched 44-Hole Spiral	3R5818†	5,000
20 lb (75 g/m ²) – 11-Hole VeloBind	3R5134†	5,000

†Not available in Canada.

Multipurpose Perforated and Punched Papers

Business 4200 Security/Checkstock

The most important characteristics of checks are security, legibility, durability and ability to pass through a printer without jamming. That's why Xerox has developed papers for checks to conform precisely to equipment specifications for maximum performance. Each check contains five security features for your customer's protection.



92 Bright

Description	Color	Order #	Pack	Sht/Ctn	
24 lb (90 g/m ²)	Green	3R5430†	500/pack	5,000	8.5 x 11 w/3.5" perf at bottom
24 lb (90 g/m ²)	Blue	3R5431†	500/pack	5,000	8.5 x 11 w/3.5" perf at bottom

†These products not available in Canada.

Business 4200 Ring Tuff®

When you need a 3-hole punched paper, choose Xerox® Ring Tuff 3-hole punched plastic reinforced sheets for more durable, longer-lasting documents. Designed for outstanding performance for all of your multipurpose needs.



92 Bright

Description	8.5x11	Sht/Ctn
20 lb Bond (75 g/m ²) 3-Hole	3R4299	3,000

Laser and Inkjet Papers

Image Series

 **Contains 30% Post Consumer Recycled Content**

When your documents need to make an impression, be sure to specify Xerox® Premium Papers. Legal documentation, contracts and proposals take on an air of importance using these long-lasting distinguished papers that are compatible in copiers, electronic and laser printers and desktop publishing equipment.

Image Series 95 Bright is a 25% cotton watermarked paper with 30% post consumer fiber that lends itself to important documents, contracts, deeds and executive correspondence.



95 Bright

Description	8.5x11	Sht/Ctn
Image Series Elite 95 Bright – 20 lb 30% Post Consumer Fiber 25% Cotton Watermarked Paper	3R11300 †	5,000

†Not available in Canada.

Premium Laser

Specifically designed for optimum laser output, this 98 bright sheet is an exceptional choice for both color and black-and-white printing. Superior smoothness for incredibly sharp images and acid free for archival quality.



98 Bright

Description	8.5x11	Sht/Ctn
24 lb Bond	3R13038	2,500

Premium Inkjet

The perfect choice for professional quality output from your inkjet printer. This bright white sheet is perfect for vivid images and crisp, clean text. The acid free sheet is perfect for documents that need to hold up over time.



98 Bright

Description	8.5x11	Sht/Ctn
24 lb Bond	3R13037	2,500

Carbonless Papers

Xerox Premium Digital Carbonless® Paper

Expand your print opportunities with digitally optimized Xerox Premium Digital Carbonless paper created for color equipment as well as black and white printers and copiers. Minimal curling and a Capsule Control Coating that reduces contamination in machines offer consistent reliability and performance. Print your forms in-house and on-demand with razor-sharp accuracy.



Color	Description	8.5x11	Reams/ Ctn	Sets/ Ctn	8.5x14	Reams/ Ctn	Sets/ Ctn	9x11	Reams/ Ctn	Sets/ Ctn	11x17	Reams/ Ctn	Sets/ Ctn
W/C	2 Part Straight/Reverse	3R12420	10	2,500	3R12422	10	2,500				3R12423	5	1,250
W/P	2 Part Straight/Reverse	3R12421	10	2,500									
P/C/W	3 Part Reverse	3R12424	10	1,670									
W/C/P	3 Part Straight	3R12425	10	1,670	3R12427	10	1,670						
W/C/P	3 Part Straight (Mini Carton)	3R12426†	5	835									
Gr/P/C/W	4 Part Reverse	3R12429	10	1,250									
W/C/P/Gr	4 Part Straight	3R12430	10	1,250									
Color	Description	8.5x11	Reams/ Ctn	Sht/ Ctn	8.5x14	Sht/ Ctn	9x11	Sht/ Ctn	11x17	Sht/ Ctn			
W	CB Singles	3R12434	10	5,000									
W	CFB Singles	3R12435	10	5,000									
W	CF Singles	3R12440	10	5,000									
C	CFB Singles	3R12437	10	5,000									
P	CF Singles	3R12439	10	5,000									

W = White, B = Blue, G = Green, C = Canary, P = Pink, Gr = Goldenrod

†Not available in Canada.

Carbonless Papers

Universal Carbonless Paper

Universal Carbonless is ideally suited to run in both long-run offset and shorter run digital. Receive benchmark performance in digital printers and offset presses with the industry's brightest base sheet yielding the darkest, most fade resistant images. Universal Carbonless paper has been engineered to run cleaner to reduce the risk of machine contamination and offer consistent reliability and performance to enhance productivity.



Color	Description	8.5x11	Reams/ Ctn	Sets/Ctn	8.5x14	Reams/ Ctn	Sets/Ctn	9x11	Reams/ Ctn	Sets/Ctn	11x17	Reams/ Ctn	Sets/Ctn
C/W	2 Part Reverse/Straight	3R12850	10	2,500	3R12852	10	2,500				3R12853	5	1,250
C/W	2 Part Reverse/Straight										3R12877*	5	1,250
P/W	2 Part Reverse/Straight	3R12851	10	2,500									
P/C/W	3 Part Reverse	3R12854	10	1,670	3R12873	10	1,670				3R12860	5	835
W/C/P	3 Part Straight	3R12855	10	1,670	3R12861	10	1,670				3R12875	5	835
Gr/P/C/W	4 Part Reverse	3R12856	10	1,250	3R12872	10	1,250				3R12862	5	625
W/C/P/Gr	4 Part Straight	3R12857	10	1,250							3R12878	5	625
Gr/P/C/B/W	5 Part Reverse	3R12863	10	1,000									
Color	Description	8.5x11.5	Reams/ Ctn	Sets/Ctn	8.5x14	Reams/ Ctn	Sets/Ctn	9x11	Reams/ Ctn	Sets/Ctn	11x17	Reams/ Ctn	Sets/Ctn
C/W	Perf 2 Part Reverse/ Straight	3R12871*	10	2,500				3R12870	10	2,500			
P/C/W	Perf 3 Part Reverse	3R12868*	10	1,670				3R12869	10	1,670			
Color	Description	8.5x11	Reams/ Ctn	Sets/Ctn	8.5x14	Reams/ Ctn	Sets/Ctn	9x11	Reams/ Ctn	Sets/Ctn	11x17	Reams/ Ctn	Sets/Ctn
W	21 lb CB Singles	3R12858	10	5,000									
W	22 lb CFB Singles	3R12859	10	5,000									
P	21 lb CF Singles	3R12865	10	5,000									
C	21 lb CF Singles	3R12866	10	5,000									
C	22 lb CFB Singles	3R12867	10	5,000									
P	20 lb CFB Singles	3R12876	10	5,000									
W	105 lb CF White Tag	3R12874	10	2,500									
Manila	105 lb CF Manila Tag	3R12864	10	2,500									

W = White, C = Canary, P = Pink, Gr = Goldenrod, B = Blue

* Short Grain

Padding Adhesive

Xerox® Padding Adhesive is perfectly paired with our carbonless papers to yield strong form sets that fan apart easily.

Quantity	Order #	Qts/Pal
1 Quart	8R7870	16

Digital Synthetic Papers

Premium Never Tear

This synthetic paper made from a polyester film is tear, water and chemical resistant. The film has a special two-sided coated matte finish and a paper-like appearance. Premium Never Tear is an ideal choice for tough applications and heavy use.



Thickness	8.5x11	Sht/Ctn	17x11	Sht/Ctn	18x12	Sht/Ctn	20.5x14.33	Sht/Ctn
3.7 mil	3R12800*	1,000			3R14500	500		
	3R12405*	500			3R12801	50		
	3R12414	100						
4.7 mil	3R12802*	1,000	3R12365	100	3R14501*	500		
	3R12363	100			3R12803*	50		
4.7mil 3HD	3R12364	100						
5.7mil	3R14502*	1,000			3R14503*	500		
	3R12804*	100			3R12805*	50		
7.7 mil	3R14504*	500			3R12495	250	3R14540*	250
	3R12806*	100			3R12492	50		
10.7mil	3R14505*	500			3R12496	250	3R14541*	250
	3R12808*	100			3R12493	50		
14 mil	3R14506*	500			3R12497	200	3R14542*	200
	3R12810*	100			3R12494	50		

*Mill Direct Ship – Please allow 2-5 days for delivery

Digital Synthetic Papers

Specialty Premium Never Tear

Description	8.5x11	Sht/Ctn	17x11	Sht/Ctn	18x12	Sht/Ctn	20.5x14.33	Sht/Ctn
Pink Pastel 5 mil	3R14507*	1,000			3R14508*	500		
					3R14509*	50		
Blue Pastel 5 mil	3R14510*	1,000			3R14511*	500		
					3R14512*	50		
Yellow Pastel 5 mil	3R14513*	1,000			3R14514*	500		
					3R14515*	50		
Green Pastel 5 mil	3R14516*	1,000			3R14517*	500		
					3R14518*	50		
Clear w/ Paperpack 7.4 mil					3R14531*	250		
					3R14532*	50		
White 3up Door Hangers 7.7 mil	3R14536*	500						
					3R12816*	100		
White 4up Luggage Tags 7.7 mil	3R14538*	500						
					3R12812*	100		
White 6up Badges 7.7 mil	3R14539*	500						
					3R12814*	100		
White 6up ID Cards 7.7 mil	3R14535*	500						
					3R12813*	100		
White 6up Parking Passes 7.7 mil	3R14533*	500						
					3R12815*	100		
White 8up Bookmarks 7.7 mil	3R14537*	500						
					3R12817*	100		
White Fun Pack 7.7 mil	3R14534*	500						
					3R12818*	100		

*Mill Direct Ship – Please allow 2-5 days for delivery

Digital Synthetic Papers

DuraPaper®

This extra-heavyweight, coated polyolefin film is a pliable sheet that bonds readily with toner making it ideal for documents that need to stand up to heavy use. This sheet provides a long lasting, high-quality finish that's waterproof, chemically resistant, durable and adaptable.



Description	Thickness	Order #	Sht/Box
8.5 x 11	10 mil	3R12064	100
11 x 17	10 mil	3R12063	100

Premium Digital 1 Up Labels

Premium Never Tear 1 Up Labels

Description	8.5x11	Sht/Ctn	17x11	Sht/Ctn	12x18	Sht/Ctn	20.5x14.33	Sht/Ctn
White Gloss w/ Permanent Adhesive (poly liner)	3R14601*	500			3R14603*	250		
	3R14600*	100			3R14602*	50		
White Matte w/ Permanent Adhesive (poly liner)	3R14605*	500			3R14607*	250		
	3R14604*	100			3R14606*	50		
White Matte w/ Low Tack Adhesive	3R14609	500			3R14611*	250		
	3R14608	100			3R14610	50		
Frosted w/ Permanent Adhesive	3R14617*	500			3R14619*	250		
	3R14616*	100			3R14618*	50		
Clear Gloss w/ Permanent Adhesive	3R14628*	500			3R14635*	250		
	3R14640*	100			3R14641*	50		
Clear Gloss w/ Low Tack Adhesive	3R14613	500			3R14615	250		
	3R14612*	100			3R14614	50		

*Mill Direct Ship – Please allow 2-5 days for delivery

Vinyl 1 Up Labels

Description	8.5x11	Sht/Ctn	17x11	Sht/Ctn	12x18	Sht/Ctn	20.5x14.33	Sht/Ctn
White Vinyl w/ Permanent Adhesive	3R14626	500			3R14627	250		
White Vinyl w/ Removable Adhesive	3R14628	500			3R14629	250		
White Vinyl w/ Low Tack Adhesive	3R14630*	500			3R14631*	250		
Frosty Vinyl w/ Removable Adhesive	3R14632*	500			3R14633*	250		
Frosty Vinyl w/ Low Tack Adhesive	3R14636*	500			3R14637*	250		

*Mill Direct Ship – Please allow 2-5 days for delivery

Photo Applications Paper

Xerox® EverFlat Image Solutions Paper®

- Now you can produce distinctive books on heavy coverweight paper that lay and stay flat.
- Now you can design books with expanded layout options for text, graphics and photos—including full crossovers—without image loss in the gutter.
- Books are easy to hold and easy to read. Pages lie flat and won't flip over on their own.
- The perfect solution for photo books, cookbooks, music books, manuals and textbooks.



Weight	Size	Order #	Sht/ Ctn	Size	Order #	Shts/ Ctn	Size	Order #	Sht/ Ctn	Size	Order #	Sht/ Ctn
80 lb Cover	12.6 x 13	3R12486	250	8.5 x 11	3R12487	300	11 x 8.5	3R12488	300	13 x 13	3R12641	250

PhotoPix

- Simple, easy, affordable and productive.
- Digital photo production, multi-up on one sheet—from classic school photos to sports teams and individual photos to family holiday portraits.
- Available in a pre-perforated, tabloid size sheet for a glossy photo reprint.
- No cutting as photo peels off or sheet folds to fit standard size envelope.



Order #		Weight	Sheet Size	Sheets
3R12483	(6) 4" x 6" photo sheet	8 pt	Tabloid	100
3R12484	Enlargement mix	8 pt	Tabloid	100

Photo Applications Paper

AccordionPix®

- Compact, sturdy, multi-image display that is a freestanding, two-sided panoramic photo array that displays eight photos (four on each side).
- Simplex prints on 8.5 x 14 sheet that yields eight photos.
- There is no need for framing or extra support as it folds into an accordion style.
- Perfect application for stand-up restaurant menus or innovative business promotion.



Order #		Weight	Sheet Size	Sheets
3R12485	Yields 8 photos	60 lb	8.5 x 14	100

SportsPix®

- Classic trading cards for digital printing.
- Variable data application that's easy to print and doesn't require additional finishing.
- Two duplex trading cards from a single sided 8.5 x 11 sheet with no pre- or post-finishing required as cards are pre-kiss-cut and will pop right out.



Order #		Weight	Sheet Size	Sheets
3R12480		60 lb	8.5 x 11	100

FunFlip®

- The origami of media applications.
- An unforgettable, interactive, four-sided, dimensional application and the perfect complement to a traditional 4" x 6" photo.
- Perfect for product promotions, business cards, company presentations and party favors.



Order #		Weight	Sheet Size	Sheets
3R12482		60 lb	8.5 x 11	100

Tabs and Dividers

Organize and highlight your key messages to give more meaning to reference and training manuals, financial reports, annual reports and presentations without having to invest in expensive processing equipment. Xerox® tabs and dividers are

specially designed for compatibility with high-volume printing and copying systems. Choose from a wide variety of plain or color tabs and dividers with pre-collated and uncollated options.

Multipurpose Plain Tabs

90 lb Index white and pastel colors.



90 Bright

Single Straight

Color	Bank	Weight	9x11	9x11 3HD	Sets/Ctn
Blue	5	90 lb Index	3R5312*‡	3R5313*‡	250
White	5	90 lb Index	3R4417*	3R4418*	250

Single Position

Color	Bank	Weight	9x11	9x11 3HD	Shts/Box
White	1, 5 positions	90 lb Index	3R4407*‡	—	1,250
White	2, 4 positions	90 lb Index	3R4409*‡	—	1,250
White	3	90 lb Index	3R4411*‡	—	1,250

Single Reverse

Color	Bank	Weight	9x11	9x11 3HD	Sets/Ctn
Blue	5	90 lb Index	3R5308*‡	3R5309*‡	250
Gray	5	90 lb Index	3R5322*‡	3R5323*‡	250
White	3	90 lb Index	3R5422*‡	3R5423*‡	420
White	4	90 lb Index	3R5426*‡	3R5427*‡	320
White	5	90 lb Index	3R4415*	3R4416*	250
White	5	90 lb Index – Ring Tuff®		3R4568*‡	250
White	8	90 lb Index	3R5713*	3R5714*	150
White	5	110 lb Index	3R5717*‡	3R5718*‡	200

*Free template info.

‡Not available in Canada.

Tabs and Dividers

Multipurpose Plastic Tabs

90 lb Index with printable plastic laminated on both sides of the tabbed area.



Single Straight

Color	Bank	Weight	9x11	9x11 3HD	Sets/Ctn
Clear	5	90 lb Index	3R5709**	3R5710**	250

Single Reverse

Color	Bank	Weight	9x11	9x11 3HD	Sets/Ctn
Clear	5	90 lb Index	3R5520*	3R5521*	250
Rainbow**	5	90 lb Index	3R5650*	3R5640*	250
Blue	5	90 lb Index	3R5693*	3R5694*	250

*Free template info.
 **Red, Yellow, Blue, Green, Gray.
 †Not available in Canada.

Digital Color Plastic Printable Tabs

Reverse Collated

Color	Bank	Weight	9x11	9x11 3HD	Sets/Ctn
White	5	90 lb Index	3R12477	3R12478	250

Tabs and Dividers

92 Bright



Planet 30 Recycled Tabs

Please look for FSC® Certified products.

Single Straight

Color	Bank	Weight	9x11	9x11 3HD	Sets/Ctn
White	5	90 lb Index	3R12626	3R12627	250
White	3	110 lb Index	3R12459	3R12460	420
White	4	110 lb Index	3R12461	3R12462	320
White	5	110 lb Index	3R12463	3R12464	250
White	8	110 lb Index	3R12465	3R12466	150

Single Reverse

Color	Bank	Weight	9x11	9x11 3HD	Sets/Ctn
White	3	90 lb Index	3R12467	3R12468	420
White	5	90 lb Index	3R12624	3R12625	250
White	4	90 lb Index	3R12469	3R12470	320
White	8	90 lb Index	3R12471	3R12472	150
White	5	110 lb Index	3R12628	3R12629	250

Xpressions+ Tabs

98 Bright

90 lb Index

Single Reverse

Color	Bank	Weight	9x11	9x11 3HD	Sets/Ctn
White	5	90 lb Index	3R12366*	3R12367*	250

*Free template info.

Single Straight

Color	Bank	Weight	9x11	9x11 3HD	Sets/Ctn
White	5	90 lb Index	3R12368*	3R12369*	250

*Free template info.

Labels

A simple label is often the first impression customers receive. Use our premium white self-adhesive labels and show them quality is an integral part of your company. Special release agents ensure our labels stick to documents, not in copiers,

so they do not contaminate machines with adhesive residue. Available in uncoated, gloss and matte coated finishes to meet all your custom, on-demand labeling needs.

Digital Color Select Gloss® Labels

High gloss face stock with a bright white finish available in a variety of configurations.



Label Cut – Size	Order #	Sht/Box	
1 Up – 8.5 x 11 Die Cut	3R12735*	100	
1 Up – 8.5 x 11 Full Sheet	3R12736	100	In Canada only 544P17497
4 Up – 8.5 x 11	3R12737*	100	
2 Up – CD/DVD – 8.5 x 11	3R12738*	25	
6 Up – CD/DVD – 11 x 17	3R12739*	75	
10 Up – 8.5 x 11	3R12740	100	
30 Up – 8.5 x 11	3R12741	100	

*Free template info.

Labels

Digital Color Xpressions® Matte Labels

Matte face stock with a bright white finish available in a variety of configurations.



Label Cut – Size	Order #	Sht/Box	
1 Up – 8.5 x 11 Die Cut	3R5772*	100	
1 Up – 8.5 x 11 Full Sheet	3R12371	100	In Canada only 544P17498
4 Up – 8.5 x 11	3R5773*	100	
10 Up – 8.5 x 11	3R6332	100	
30 Up – 8.5 x 11	3R6333	100	
2 Up – CD/DVD – 8.5 x 11	3R6330*	25	
6 Up – CD/DVD – 11 x 17	3R12373*	75	

*Free template info.

Plain Paper Labels



Label Cut – Size	Order #	Sht/Box	
1 Up – 8.5 x 11	3R12057	100	
8 Up – 4 x 2.5	3R12056	100	
10 Up – 4 x 2	3R12055	100	
14 Up – 4 x 1.33	3R12054	100	
20 Up – 4 x 1	3R12053	100	
24 Up – 2.6 x 1.25	3R12052	100	
30 Up – 2.6 x 1	3R12051	100	
33 Up – 2.8 x 1	3R12050	100	
33 Up – 2.8 x 1 Clear	3R5139†	100	
1 Up – 8.5 x 11	3R4476†	1,000	High Speed Labels
6 Up – 4.25 x 3.7	3R3146†	1,000	High Speed Labels
8 Up – 4.25 x 2.7	3R4475†	1,000	High Speed Labels
14 Up – 4.25 x 1.6	3R5719†	1,000	High Speed Labels
24 Up – 2.8 x 1.3	3R4474†	1,000	High Speed Labels
33 Up – 2.8 x 1	3R3139†	1,000	High Speed Labels

†Not available in Canada.

Transparencies

Thanks to the special care we take when we develop our transparencies, you receive the clearest possible images and bright color from your printer or copier. A special coating optimizes color reproduction, minimizes static, and ensures maximum toner adhesion and heat stabilization to reduce jamming and buckling.



Transparencies

Description	8.5x11	Sht/Box	11x17	Sht/Box	12x18	Sht/Box
Monochrome Printer Clear	3R3117	100				
Color Printer Clear	3R12505	50				
Removable Stripe	3R3108	100				
Paperback	3R12820	100				
Production Printer Paperback			3R12821	250	3R12822	250

Specialty Media

Digital Color Tri-fold Brochures

Use an innovative approach to one-to-one, on-demand communications with no finishing required. Our 8 1/2 x 11 sized paper is pre-scored for easy folding and delivers the same bright color, sharp text and professional looking documents that you've come to expect from Xerox® specialty media.



Description	Size	Order #	Sht/Ctn
Coated 1 Side 8 pt (160 g/m ²)	8.5 x 11	3R6348*	250

*Free template info.

Specialty Media

Transfer Paper

Available in two sizes, Xerox® transfer paper allows you to use color copiers or printers to lock in bold, full-color graphics for high-quality transfer to t-shirts, aprons, canvas bags, mouse pads, hats and other clothing.



Laser Transfer Paper

Size	Order #	Sht/Box
8.5 x 11	3R12648	100
11 x 17	3R12649	100

Digital EA Transfer Paper

Size	Order #	Sht/Box
8.5 x 11	3R12398	50
11 x 17	3R12397	50

Business Reply Envelopes

- Print on demand personalized documents
- Decrease turnaround time
- Improve productivity

Applications include:

- Application packets
- Healthcare applications
- Education programs



Description	Order #	Sht/Ctn
8.5 x 11 Standard BRE	3R12445†	1,000

†Not available in Canada.

Presentation Supplies

Your folders should maintain the same level of professionalism as the document you place inside of them. Create an impression by digitally printing vibrant color graphics and sharp, crisp text on our heavyweight white coated or uncoated

folders. They can be easily tailored to hold presentations, sales collaterals, real estate materials or seminar agenda information. Easy to assemble, they come with pre-cut slits on the inside pocket to securely hold business cards.

High Gloss Folders

Fully printable front Cover, 10 pt and 12 pt Supreme Gloss

Description	Size	Order #	Sht/Box	
High Gloss Folders – 10 pt	9.25 x 11.75	3R5570*	100	1 Pocket
High Gloss Folders – 12 pt	9.25 x 11.75	3R12458*‡	50	1 Pocket

*Free template info.
‡Not available in Canada.

Presentation Supplies

Document Folders 2 Pocket

Fully printable cover



Description	Size	Order #	Sht/Box	
10 pt Super Gloss	18 x 12	3R12407*	100	2 Pockets

*Free template info.

Binding Supplies

Production Binder Covers

Create a prestigious professional look right in your office. Choose your binder cover and insert a document. In less than 60 seconds, heat-sensitive glue activates to give you a seamless professional binding.

Ideal for executive reports, critical proposals, training manuals. The Xerox® Production 5000 lets you bind documents up to 2" thick in minutes or up to 20 smaller documents simultaneously. Get quick, clean, professional binding results right in your own office. Turn your important proposals and other documents into perfect bound, professional looking show pieces.

Description	Order #
Production 5000 Binder	8R3810

Antique Covers

These covers with clear plastic fronts and solid color backs turn your proposals and other documents into prestigious, perfect bound, professional looking showpieces.



Spine	Black	Covers/Ctn	White	Covers/Ctn	Navy	Covers/Ctn
1/16"	3R12650	100	3R12657	100	3R12693	100
1/8"	3R12651	90	3R12658	90	3R12694	90
1/4"	3R12652	80	3R12659	80	3R12695	80
3/8"	3R12653	70	3R12660	70	3R12696	70
1/2"	3R12654	60	3R12661	60	3R12697	60
5/8"	3R12655	50	3R12662	50	3R12698	50
3/4"	3R12656	50	3R12663	50	3R12699	50
1"	3R12683	40	3R12688	40	3R12700	40

All above products are not available in Canada.

Binding Supplies

Print On Demand Covers

These pre-formed white, glossy covers allow you to create personalized covers with your own artwork to truly customize your documents on demand.



Spine	Order #	Covers/Ctn
1/16"	3R12676	100
1/8"	3R12677	90
1/4"	3R12678	80
3/8"	3R12679	70
1/2"	3R12680	60
5/8"	3R12681	50
3/4"	3R12682	50
1"	3R12705	40

Hard Covers

Black cowhide leather-like finish hard cover with one window. Perfect for displaying your memorable pictures, illustrations and many other applications.



Spine	Order No.	Description	Covers/Box
1/8"	3R12521	1 Window, 4-3/4" x 3-1/2" centered left to right and 2" from the top of the cover	13
1/4"	3R12522	1 Window, 4-3/4" x 3-1/2" centered left to right and 2" from the top of the cover	11
3/8"	3R12523	1 Window, 4-3/4" x 3-1/2" centered left to right and 2" from the top of the cover	9
1/2"	3R12524	1 Window, 4-3/4" x 3-1/2" centered left to right and 2" from the top of the cover	8
3/4"	3R12675	1 Window, 4-3/4" x 3-1/2" centered left to right and 2" from the top of the cover	5
1"	3R12707	1 Window, 4-3/4" x 3-1/2" centered left to right and 2" from the top of the cover	4

Binding Supplies

Document Binder 120 Covers

Document Binder 120 clear front covers come in two styles, Series 100 and Series 200 coated covers and Impression uncoated covers.

Continuous inline thermal binding is available for Xerox® 5800, 5895, 5892, 5100, 5885, 5890, DC 2045, DC 2060, DC 5252, DC 6060, DC 7000, DC 8000, Xerox Nuvera® 100/120 Digital Production System.

Series 100 Classic Covers

Spine	White
1/16"	3R8860
1/8"	3R8861
1/4"	3R8862
3/8"	3R8863
1/2"	3R8864

‡Not available in Canada.

Series 200 Classic Covers

Spine	Page Volume	Black	Burgundy	Green	Navy Blue	Red	Royal Blue
1/16"	1–15	3R8865	3R8880	3R8885	3R8875	3R8870	3R8890
1/8"	16–30	3R8866	3R8881	3R8886	3R8876	3R8871	3R8891
1/4"	31–60	3R8867	3R8882	3R8887	3R8877	3R8872	3R8892
3/8"	61–90	3R8868	3R8883	3R8888	3R8878	3R8873	3R8893
1/2"	91–120	3R8869	3R8884	3R8889	3R8879	3R8874	3R8894

‡Not available in Canada.

Note: All covers are packaged 150 per cassette, 3 cassettes per carton. Cover page volume is based on 20 lb paper. If using heavier paper, a larger spine size may be required. When binding in-line, maximum page volume is 100, minimum is 5.

Phaser® Color Printer Media

Phaser Color Printer Media

Phaser brand media products have been developed and tested for superior image quality with Xerox® Phaser color printers. These premium products provide professional-looking documents with brilliant color every print.

Paper

Description	8.5x11	Sheets/Box	11x17	Sht/Box
24/60 lb Text (90 g/m ²) Premium Color Printing Paper	3R12509	500	3R12510	500
100 lb Text (140 g/m ²) Glossy Coated Paper	3R12512	100		

Transparency

Description	8.5x11	Sht/Box
Professional Transparency	3R12505	50

Custom Solutions and Applications

Let Xerox turn your ideas into solutions. Xerox® Custom Solutions offers a variety of customized media products and applications specifically tailored to meet our customers' unique needs and improve their bottom line. Our portfolio is limited only by your imagination!



ID Card Solutions



Tab and Folder Solutions



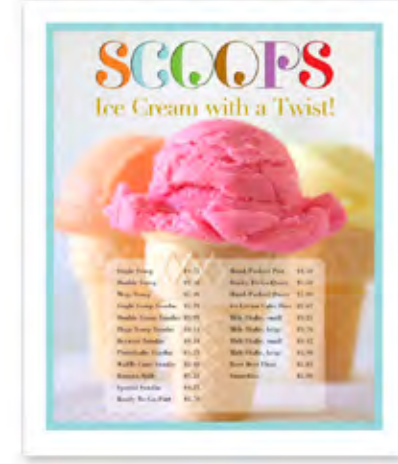
Pressure Sensitive Solutions



Impression Solutions



Mail Solutions



Durable Paper Solutions

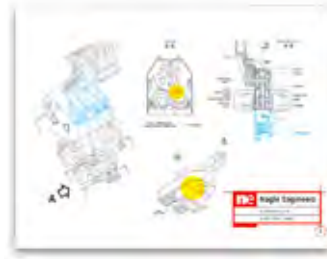


Also available:
Form and Check Stock Solutions
Roll and Continuous
Feed Solutions

Wide Format Reprographic Media

Premium Bond

Get the most out of your copiers and printers with Xerox® Premium Bond, the premium multipurpose 20 lb sheet bond that is perfect for everyday use. Consistently smooth to help generate sharp, accurate lines, Xerox® Premium Bond is ideally suited for engineering drawings, drafts, copies, CAD plots and prints.



Specifications

Weight	Grade	Permanence	Brightness	Opacity	Caliper	Stiffness
20 lb	4	TYPE III ASTM: 50-100 Year	96%	88%	3.8 mils	1.9 MD (0.8CD MIN)

Cut Sheet Sizes

Size	Order #	Sheets/Rolls/Cartons	Units/Skid
11" x 17"	3R3152	250/8	24
17" x 22"	3R3154	250/4	24
18" x 24"	3R3155	250/4	24
22" x 34"	3R3156	250/2	24
24" x 36"	3R3157	250/2	24
30" x 42"	3R3680#	100/3	24
36" x 48"	3R3682	100/2	20

#Not available in Canada.

Roll Sizes – All Rolls Taped to 3" Core

Size	Order #	Sheets/Rolls/Cartons	Units/Skid
36" x 150'	3R3683#	4	16
36" x 250'	3R5930#	2	24
17" x 500'	3R4451	4	21
18" x 500'	3R3360	4	21
22" x 500'	3R3684	2	42
24" x 500'	3R3685	2	42
30" x 500'	3R3401	2	21
34" x 500'	3R3362	2	21
36" x 500'	3R3363	2	21

#Not available in Canada.

Roll Sizes – All Rolls NOT Taped to 3" Core

Size	Order #	Sheets/Rolls/Cartons	Units/Skid
36" x 500'	3R6450	2	21

Wide Format Reprographic Media

Performance Bond

High-quality plain paper for cost-effective everyday plans, copying and printing requirements.

92 Bright



Specifications

Weight	Grade	Permanence	Brightness	Opacity
20 lb	4	TYPE III ASTM: 50-100 Year	92%	88%

Cut Sheet Sizes

Size	Order #	Sheets per Pack	Packs or Rolls/Cartons	Cartons/Pallet
12" x 18"	3R5905+	250	8	24
18" x 24"	3R5156	250	4	24
22" x 34"	3R5160+	250	2	24
24" x 36"	3R5145	250	2	24
30" x 42"	3R5146	100	3	20
36" x 48"	3R5161	100	2	20

‡Not available in Canada.

Roll Sizes – All Rolls on 3" Core

Size	Rolls/Cartons	Cartons/Pallet	Taped to Core (Xerox® Printers)	NOT Taped to Core (Non-Xerox® Printers)
11" x 500'	4	42	3R5901	3R5910
12" x 500'	4	42	3R5902	—
17" x 500'	4	21	3R5903	3R5912
18" x 500'	4	21	3R5147	3R5913
22" x 500'	2	42	3R5904	3R5914
24" x 500'	2	42	3R5148	3R5915
30" x 500'	2	21	3R5149	3R5916
34" x 500'	2	21	3R5150	3R5917
36" x 250'	2	24	3R5936	—
36" x 500'	2	21	3R5151	3R5918

Bulk Cargo Boxes – All Rolls on 3" Core

Size	Rolls/Pallet	Taped to Core (Xerox® Printers)	NOT Taped to Core (Non-Xerox® Printers)
11" x 500'	88	3R6788	—
18" x 500'	88	3R6789	—
22" x 500'	44	3R6790	3R6783
24" x 500'	44	3R6791	3R6784
30" x 500'	44	3R6792	3R6785
30" x 650'	36	—	3R14105
34" x 500'	44	3R6793	3R6786
36" x 500'	44	3R6794	3R6787
36" x 650'	36	—	3R14106

Wide Format Reprographic Media

24 lb Performance Bond

A heavyweight alkaline 24 lb presentation sheet that is exceptionally opaque, bright and smooth for outstanding copy quality, file longevity and image contrast. Its acid-free formulation is non-yellowing, while being environmentally friendly and super bright white. This 24 lb sheet has excellent stiffness and curl control to minimize jamming.



Specifications

Weight	Grade	Permanence	Brightness	Opacity
24 lb	1	TYPE I ASTM: 300-500 Year	92%	92%

Roll Sizes – All Rolls Taped to 3" Core

Size	Order #	Rolls per Carton
24" x 450'	3R14009	2
36" x 450'	3R4881	2

Products above are not available in Canada.

20 lb Performance Recycled Bond

 **Contains 30% Post Consumer Recycled Content**

Environmentally conscious customers now have a choice when it comes to Xerox® Performance Bond Papers. This new 92 Bright, 20 lb multipurpose paper contains 30% post consumer material and meets all the characteristics specified for Performance Bond. Its acid-free formulation is non-yellowing, while being environmentally friendly, and is perfect for everyday use.



Specifications

Weight	Grade	Permanence	Brightness	Opacity
20 lb	4	TYPE III ASTM: 50-100 Year	92%	88%

Roll Sizes – All Rolls Taped to 3" Core

Size	Order #	Rolls per Carton
24" x 500'	3R4321	2
30" x 500'	3R14010	2
36" x 500'	3R4322	2

Wide Format Reprographic Media

Translucent Bond

Designed to be both an opaque copy bond and diazo intermediate, this economical bond alternative contains no chemical transparentizers. Translucent Bond is an excellent alternative to high-cost vellums or can be used as a substrate for plotters. Its versatility and economics makes Translucent Bond excellent for plotting or copying needs.



Specifications

Weight	Grade	Permanence	Brightness	Opacity
18 lb	4	TYPE IV ASTM: Up to 50 Year	4.5%	74%

Roll Sizes – All Rolls Taped to 3" Core

Size	Order #	Packs or Rolls/Cartons	Cartons/Pallet
30" x 500'	3R3413 †	2	28
36" x 500'	3R3415	2	28

†Not available in Canada.

20 lb Performance Vellum

100% Cotton Construction: 100% rag cotton is used to create Xerox® Performance Vellum—a benchmark in the industry.



Specifications

Weight	Grade	Permanence	Opacity
20 lb	4	TYPE III ASTM: 100-200 Year	65%

Roll Sizes – All Rolls Taped to 3" Core

Size	Order #	Packs or Rolls/Carton	Cartons/Pallet
30" x 500'	3R6476 †	1	24
34" x 500'	3R6477 †	1	24
36" x 500'	3R6478	1	24

†Not available in Canada.

Wide Format Reprographic Media

20 lb Production Vellum

Economical Xerox® 20 lb Production Vellum performs, looks and feels like a cotton vellum but costs appreciably less.

Specifications

Weight	Grade	Permanence	Opacity
20 lb	4	TYPE II ASTM: 100-200 Year	65%

Roll Sizes – All Rolls Taped to 3" Core

Size	Order #	Packs or Rolls/Carton	Cartons/Pallet
36" x 500'	3R6483	1	24

#Not available in Canada.

Accu-Image Elite Plus Film

This enhanced polyester film has a double matte erasable coating that offers excellent toner adhesion, dimensional stability and a smooth drafting surface. This film's durability makes it ideal for archival storage applications.

Specifications

Caliper	Smoothness	Permanence	Opacity	Coating Thickness
4.3-4.8 mils	50 Max	Highest ASTM: More than 500 Years	43%	.0003"- 00045"

4 Mil Roll Sizes – All Rolls Taped to 3" Core

Size	Order #	Packs or Rolls/Carton	Cartons/Pallet
24" x 150'	3R14011	1	40
30" x 150'	3R14012	1	30
34" x 150'	3R14013	1	30
36" x 150'	3R14014	1	30

Wide Format

Reprographic Consumables

Xerox® Wide Format Supplies (Consumables)

Xerox® toners are image makers. They produce high-quality copies that in turn help create high-quality business images. Xerox® toners are unlike any others because they are specially formulated to work with the unique qualities of Xerox® equipment. Xerox® developers provide crisp, clean copies and optimum machine performance. They also provide an “insurance policy.”



Reprographic Consumables

Product	Reorder Number	Description	Units/Carton	Yield/Carton
3001	6R923	3001 Toner – Obsolete*	1	2,000 ln ft
30xx	6R884	30xx Toner	1	2,400 ln ft
8830/8825	6R891	8830/8825 Toner	1	4,100 ln ft
8850/510P	6R989	8850/510P Toner	1	9,000 ln ft
6030 6050	6R1185	6030/6050 Toner	1	23,000 sq ft
6204, 6604/6605	6R1238	6204, 6604/6605 Toner	1	14,300 sq ft
8855	6R855	8855 Toner	8	82,150 sq ft
721P	6R1141	721P Toner	8	116,000 sq ft
6622	6R1445	6622 Toner	4	58,000 sq ft
Max200 Bk	6R998	Max 200 Black Toner	1	18,000 sq ft
6279	6R1374	6279 Black Toner	1	34,200 sq ft
30xx	5R310	30xx Developer	1	40,000 ln ft
8850/510P	5R633	8850/510P Developer	1	product life
8855	5R594	8855 Developer	1	131,000 ln ft
Max200 Bk	5R634	Max 200 Black Developer	1	275,000 sq ft
Max200 Rd	5R635	Max 200 Red Developer	1	200,000 sq ft

*Obsolete products available until current inventory is depleted

Wide Format

Inkjet Consumables

Dye

Product	Order #	Description	Units/Carton	Yield/Carton
8142®/8160®	8R12991	8142/8160 Cyan Ink Dye, 24 oz	1	700 mL
8142/8160	8R12992	8142/8160 Magenta Ink Dye, 24 oz	1	700 mL
8142/8160	8R12993	8142/8160 Yellow Ink Dye, 24 oz	1	700 mL
8142/8160	8R12994	8142/8160 Black Ink Dye, 24 oz	1	700 mL
8142/8160	8R12995	8142/8160 Light Cyan Ink Dye, 24 oz	1	700 mL
8142/8160	8R12996	8142/8160 Light Magenta Ink Dye, 24 oz	1	700 mL

Pigment

Product	Order #	Description	Units/Carton	Yield/Carton
8142/8160	8R12997	8142/8160 Cyan Ink Pigment, 24 oz	1	700 mL
8142/8160	8R12998	8142/8160 Magenta Ink Pigment, 24 oz	1	700 mL
8142/8160	8R12999	8142/8160 Yellow Ink Pigment, 24 oz	1	700 mL
8142/8160	8R12910	8142/8160 Black Ink Pigment, 24 oz	1	700 mL
8142/8160	8R12909	8142/8160 Light Cyan Ink Pigment, 24 oz	1	700 mL
8142/8160	8R12975	8142/8160 Light Magenta Ink Pigment, 24 oz	1	700 mL

Print Heads – Dye

Product	Order #	Description	Units/Carton	Yield/Carton
8142/8160	71N155	8142/8160 Cyan Print Head Cartridge	1	Hard stop after 2,800 mL pass through ↓
8142/8160	71N156	8142/8160 Magenta Print Head Cartridge	1	
8142/8160	71N157	8142/8160 Yellow Print Head Cartridge	1	
8142/8160	71N158	8142/8160 Black Print Head Cartridge	1	
8142/8160	71N159	8142/8160 Light Cyan Print Head Cartridge	1	
8142/8160	71N160	8142/8160 Light Magenta Print Head Cartridge	1	

Print Heads – Pigment

Product	Order #	Description	Units/Carton	Yield/Carton
8142®/8160®	71N161	8142/8160 Cyan Print Head Cartridge	1	Hard stop after 2,800 mL pass through ↓
8142/8160	71N162	8142/8160 Magenta Print Head Cartridge	1	
8142/8160	71N163	8142/8160 Yellow Print Head Cartridge	1	
8142/8160	71N164	8142/8160 Black Print Head Cartridge	1	
8142/8160	71N165	8142/8160 Light Cyan Print Head Cartridge	1	
8142/8160	71N166	8142/8160 Light Magenta Print Head Cartridge	1	

Wide Format Inkjet Consumables

8254®/8264® Eco Ultra Inks

Product	Order #	Description	Units/Carton	Yield/Carton
8254/8264	106R1227	8254/8264 Black Eco Ink	1	220 mL
8254/8264	106R1228	8254/8264 Cyan Eco Ink	1	220 mL
8254/8264	106R1229	8254/8264 Magenta Eco Ink	1	220 mL
8254/8264	106R1230	8254/8264 Yellow Eco Ink	1	220 mL

8264 Eco Ultra Solvent Inks

Product	Order #	Description	Units/Carton	Yield/Carton
8264	106R1251	8265/8290 Black Eco Ink	1	440 mL
8264	106R1252	8265/8290 Cyan Eco Ink	1	440 mL
8264	106R1253	8265/8290 Magenta Eco Ink	1	440 mL
8264	106R1254	8265/8290 Yellow Eco Ink	1	440 mL

8265®/8290® Eco Ultra Inks

Product	Order #	Description	Units/Carton	Yield/Carton
8265/8290	106R1227	8254/8264 Black Eco Ink	1	220 mL
8265/8290	106R1228	8254/8264 Cyan Eco Ink	1	220 mL
8265/8290	106R1229	8254/8264 Magenta Eco Ink	1	220 mL
8265/8290	106R1230	8254/8264 Yellow Eco Ink	1	220 mL
8265/8290	106R1251	8265/8290 Black Eco Ink	1	440 mL
8265/8290	106R1252	8265/8290 Cyan Eco Ink	1	440 mL
8265/8290	106R1253	8265/8290 Magenta Eco Ink	1	440 mL
8265/8290	106R1254	8265/8290 Yellow Eco Ink	1	440 mL
8265/8290	106R1255	8265/8290 Light Magenta Eco Ink	1	440 mL
8265/8290	106R1256	8265/8290 Light Cyan Eco Ink	1	440 mL

8365®/8390® Mild Solvent Inks

Product	Order #	Description	Units/Carton	Yield/Carton
8365/8390	106R1239	8365/8290 Black Mild Ink	1	440 mL
8365/8390	106R1240	8365/8390 Cyan Mild Ink	1	440 mL
8365/8390	106R1241	8365/8390 Magenta Mild Ink	1	440 mL
8365/8390	106R1242	8365/8390 Yellow Mild Ink	1	440 mL
8365/8390	106R1243	8365/8390 Light Cyan Mild Ink	1	440 mL
8365/8390	106R1244	8365/8390 Light Magenta Mild Ink	1	440 mL

Wide Format

Miscellaneous Consumables

Product	Order #	Description	Units/Carton	Yield/Carton
8142/8160	108R763	8142/8160 Cutting Blades (5-pack)	1	N/A
8900, 8954	26R389	Black hi-Brite Premix, 1.5 gal	1	N/A
8900, 8954	26R401	Black hi-Brite Concentrate, 20 oz	1	N/A
CE3200, CE3400	26R444	Clear Dispersant, 1.5 gallon	1	N/A
	5N736	Media End Cap	1	N/A
8142/8160	8R12982	8142/8160 Ink Switch Over Kit	1	N/A
6204, 6604/6605	8R13014	6204, 6604/6605 Waste Bottle	1	N/A
6279	8R13058	6279 Waste Toner Bottle	1	N/A
5090	8R79	Fuser Oil	1	300,000 prints
8265/8290/8365/8390	108R801	8265/8290/8365/8390 Cutting Blade	1	N/A
8265/8290/8365/8390	108R802	8265/8290/8365/8390 Waste Bottle	1	N/A
8265/8290/8365/8390	108R805	8265/8290/8365/8390 Printhead	1	N/A
8365/8390	108R811	8365/8390 Air Filter	1	N/A
8254/8264 and 8265/8290	108R735	8254/8264 and 8265/8290 Cleaning Cassette, Eco Ink	1	N/A
8265/8290	108R804	8265/8290 6 Month User Kit, Eco Ink+	1	N/A
8254/8264	108R856	8254/8264 Printhead	1	N/A
8254/8264 and 8265/8290	108R857	8254/8264 and 8265/8290 Poly-Knit Wiper	300	N/A
8254/8264 and 8265/8290	108R858	8254/8264 and 8265/8290 Cleaning Swab	25	N/A
8254/8264	108R859	8254/8264 Flushing Box Sponge	5	N/A
8254/8264	108R860	8254/8264 Cleaning/Maintenance Kit++	1	N/A
8254/8264 and 8265/8290	108R869	8254/8264 and 8265/8290 Cleaning Solution	1	N/A
8365/8390	108R736	8365/8390 Cleaning Cassette, Mild Ink	1	N/A
8365/8390	108R803	8365/8390 6 Month User Kit, Mild Ink	1	N/A
8254/8264 and 8265/8290	108R970	8265/8290/8365/8390 Flush Box Sponge	6	N/A

†**108R804 User Kit includes:** 24 wipers, 1 absorbent plate, 6 spitting box sponges, 2 bottles of cleaning liquid (250 ml), 100 gloves, 20 pipets (5 ml), 50 swabs and 300 poly knit wipers.

††**108R860 Cleaning/Maintenance Kit includes:** 30 lint free wipes, 25 swabs, 1 pair of plastic tweezers, 1 cleaning wiper, 5 flushing sponges and 20 rubber gloves.

Wide Format

CAD Inkjet Media

Check Plot Inkjet Bond

An economical bright white sheet excellent for producing check plots from all leading brands of CAD Inkjet printers.



Specifications

Weight	Grade	Coating	Brightness	Opacity
20 lb	4	Uncoated	92%	88%

Roll Sizes

Size	Order #	Packs or Rolls/Carton	Cartons/Pallet
24" x 150'	3R6422	4	20
30" x 150'	3R6442†	4	30
36" x 150'	3R6421	4	20
42" x 150'	3R14002†	4	20
24" x 300'	3R6495†	1	24
36" x 300'	3R6496	1	24

†Not available in Canada.

Translucent Inkjet Bond

An economical sheet excellent for plotting from all leading brands of CAD Inkjet printers. Excellent for use as a diazo intermediary.



Specifications

Weight	Grade	Coating	Opacity
18 lb	4	Uncoated	74%

Roll Sizes

Size	Order #	Packs or Rolls/Carton	Cartons/Pallet
24" x 150'	3R6432†	4	24
30" x 150'	3R6443†	4	24
36" x 150'	3R6431	4	30

†Not available in Canada.

Wide Format

CAD Inkjet Media

4 Mil Double Matte Erasable Inkjet Film

Coated on both sides to ensure accurate printing for all major inkjet printers. In addition, the double-sided coating prevents curl for better runability through inkjet plotters. Special erasable coating on Xerox® 4 mil film provides excellent clean erasability throughout the sheet.

Specifications

Caliper	Coating
4 mil	Two Sided/Erasable

Roll Sizes

Size	Order #	Packs or Rolls/Carton	Cartons/Pallet
36" x 125'	3R6430#	1	24

#Not available in Canada.

Wide Format

Aqueous Inkjet Display Graphics Media

Premium Coated Inkjet Bond

Xerox® Premium Inkjet Bond contains a specifically designed coating for high-resolution full-color images and minimum mottle, cockle, bleed and strike through. Excellent for prints using significant amounts of color, including GIS drawings.



Specifications

Weight	Grade	Coating	Brightness	Opacity
24 lb (90 g/m ²)	4	Premium Full Color	94+	95%

Roll Sizes

Size	Order #	Packs or Rolls/Carton	Cartons/Pallet
24" x 150'	3R14115	4	25
30" x 150'	3R6441#	4	30
36" x 150'	3R14116	1	33
36" x 150'	3R14117	4	25
42" x 150'	3R14118#	1	27
36" x 300'	3R14119	1	28

#Not available in Canada.

Specifications

Weight	Grade	Coating	Brightness	Opacity
32 lb (120 g/m ²)	4	Premium Full Color	94+	95%

Roll Sizes

Size	Order #	Packs or Rolls/Carton	Cartons/Pallet
36" x 100'	3R6425	1	54

Wide Format

Aqueous Inkjet Display Graphics Media

Specifications

Weight	Grade	Coating	Brightness	Opacity
36 lb (135 g/m ²)	4	Premium Full Color	94+	98%

Roll Sizes

Size	Order #	Packs or Rolls/Carton	Cartons/Pallet
24" x 100'	3R14125	1	33
30" x 100'	3R14126	1	33
36" x 100'	3R14127	1	33
42" x 100'	3R14128	1	27
60" x 100'	3R14129	1	27

Specifications

Weight	Grade	Coating	Brightness	Opacity
46 lb (173 g/m ²)	4	Premium Full Color	94+	99%

Roll Sizes

Size	Order #	Packs or Rolls/Carton	Cartons/Pallet
24" x 100'	3R14120	1	33
30" x 100'	3R14121	1	33
36" x 100'	3R14122	1	33
42" x 100'	3R14123	1	27
60" x 100'	3R14124	1	27

Wide Format

Aqueous Inkjet Display Graphics Media

Presentation Papers

Matte Presentation Paper 160 g/m²

A universally compatible high-white, heavyweight matte presentation paper designed for CAD/GIS and low coverage color graphic applications. Gives good image density and gamut with lower ink limits and therefore excellent ink economy. The heavyweight base gives this paper good stiffness and bulk, and dimensional stability makes this paper suitable for multi-panel display. Dries quickly and is suitable for both dye and pigment inks.

Specifications

Weight (g/m ²)	Caliper (mic)	Whiteness (CIE)	Opacity
160	198	132	96%

Order #	Width		Length		m ²
023R02092 ‡	914 mm	36"	31 m	100 ft	28

Not recommended for use in the Xerox® 8142/8160.
‡Not available in Canada.

Wide Format

Aqueous Inkjet Display Graphics Media

Presentation Papers

Premium Presentation Paper 170 g/m²

High-quality, heavyweight poster paper with a smooth, matte-coated surface. For photo-quality, bright colored graphic imaging, this is effectively a no-glare alternative to photo paper. The base of this media provides excellent stiffness and bulk, and full opacity. Instant dry and universally compatible with dye or pigment ink systems.

Specifications

Weight (g/m ²)	Caliper (mic)	Whiteness (CIE)	Opacity
170	185	115	97%

Order #	Width	Length	m ²
023R02178	914 mm 36"	31 m 100 ft	28

Photo Papers

Universal Photo Paper Satin 170 g/m²

High-quality bright white photo paper with a film coating on both sides and a micro-porous coating for instant drying with either dye or pigment inks. Base weight gives good stiffness and opacity but at the lighter end of the photo-paper scale to be cost-effective for everyday photographic reproductions.

Satin

Weight (g/m ²)	Caliper (mil)	Whiteness (CIE)	Opacity	Gloss
170	8 mil		80%	>30%

Order #	Width	Length	Sq Ft	Shts/Rls/Ctn	Units/Skid
003R14022†	36	100	300	1	35
003R14021†	42	100	350	1	35

†Not available in Canada.

Wide Format

Aqueous Inkjet Display Graphics Media

Photo Papers

Universal Photo Paper 195 g/m²

Premium universal, micro-porous coated photo-paper, fully compatible with all dye and pigment inks for the best possible color imaging with exceptionally fast drying time. High contrast, excellent edge definition, brilliant true colors, soft gradients—photorealistic prints in resolution up to 1440 dpi. Available with either gloss or satin finish.

Gloss

Weight (g/m ²)	Caliper (mic)/Mil	Whiteness (CIE)	Opacity	Gloss
195	200/8 mil	125	93%	80%

Order #	Width		Length		m ²
023R02110	1524 mm	60"	30.5 m	100 ft	47
023R02111	1067 mm	42"	30.5 m	100 ft	33
023R02112	914 mm	36"	30.5 m	100 ft	28
023R02113	610 mm	24"	30.5 m	100 ft	19

Satin

Weight (g/m ²)	Caliper (mic)	Whiteness (CIE)	Opacity	Gloss
195	200	125	93%	60%

Order #	Width		Length		m ²
023R02114	1524 mm	60"	30.5 m	100 ft	47
023R02115	1067 mm	42"	30.5 m	100 ft	33
023R02116	914 mm	36"	30.5 m	100 ft	28

Wide Format

Aqueous Inkjet Display Graphics Media

Photo Papers

Self-Adhesive Universal Photo Paper 170 g/m²

A premium self-adhesive universal photo paper, fully compatible with all dye and pigment inks for brilliant high contrast color imaging with exceptionally fast drying time. The adhesive layer creates a strong bond for easy mounting to a variety of surfaces.

Satin

Weight (g/m ²)	Caliper (mic)	Whiteness (CIE)	Opacity	Gloss
195	375	125	93%	60%

Order #	Width		Length		m ²
3R14016	1067 mm	42"	30.5 m	100 ft	33
3R14017	1524 mm	60"	30.5 m	100 ft	47

All above products are not available in Canada.

Photo Papers

Universal Photo Paper 220 g/m²

Universal photo base paper, film coated on both sides with a micro-porous coating for instant drying using either dye or pigment inks. High ink capacity for wide-gamut photo imaging at up to 1440 dpi resolution. For applications where a degree of stiffness and bulk is important. Available with gloss or satin finish.

Gloss

Weight (g/m ²)	Caliper (mil)	Opacity	Gloss
220	10 mil	90%	80%

Order #	Width	Length	Sq Ft	Shts/Rls/Ctn	Units/Skid
003R14025	36	100	300	1	35
003R14024	42	100	350	1	35

Satin

Order #	Width	Length	Sq Ft	Shts/Rls/Ctn	Units/Skid
003R14028	36	100	300	1	35
003R14027	42	100	350	1	35

All above products are not available in Canada.

Wide Format

Aqueous Inkjet Display Graphics Media

Banner Media

Banner Polyester 290 mic

A premium flexible polyester media with the necessary water-resistance, opacity and ability to resist edge curl for indoor and outdoor banner and display systems. Media can be sewn or punched but not welded. Complies with the requirements for classification as M2 flame retardant making this an ideal banner material for fire-sensitive environments. Works well with both dye and pigment inks.

Specifications

Weight (g/m ²)	Caliper (mic)	Whiteness (CIE)	Opacity
290	290	157	96%

Order #	Width		Length		m ²
023R01584	1372 mm	54"	15 m	49 ft	21
023R01587 ‡	1067 mm	42"	15 m	49 ft	16
023R01588 ‡	914 mm	36"	15 m	49 ft	14

‡Not available in Canada.

Banner Media

Banner Vinyl 400 g/m²

A mid-weight vinyl with a textile textured back, designed to provide a flexible, water-resistant, and tear-resistant base for indoor banners and short-term outdoor applications. Compatible with either dye or pigment inks and suitable for the full range of standard banner finishing.

Specifications

Weight (g/m ²)	Caliper (mic)	Opacity
400	385	98%

Order #	Width		Length		m ²
023R02157	1524 mm	60"	15.2 m	50 ft	23
023R02159	1067 mm	42"	15.2 m	50 ft	16
023R02160	914 mm	36"	15.2 m	50 ft	14

Wide Format

Aqueous Inkjet Display Graphics Media

Banner Media

Universal Artist Canvas 340 g/m²

A cotton-coated based artist canvas for fine art reproductions and prints that benefit from a fabric textured surface with a feel of quality. Its textured surface enhances the decorative effect as well as giving wide-angle visibility without glare. Water-resistant with an instant dry coating that is suitable for dye and pigment inks.

Specifications

Weight (g/m ²)	Caliper (mic)	Opacity
340	380	100%

Order #	Width		Length		m ²
023R01505	1067 mm	42"	12 m	40 ft	13
023R01506	914 mm	36"	12 m	40 ft	11

Outdoor Papers

Standard Satin Outdoor Papers 140 g/m²

Barrier-coated white paper with an attractive semi-gloss finish, suitable for photo-like graphics in both indoor and outdoor applications. Gives impressive color brilliance and color density with excellent edge definition. Paper remains strong in wet or humid conditions, and has a life expectancy outdoors of three months, unlaminated. This general-purpose paper is perfect for advertising, photo presentation print-outs, signs, posters, billboards and other indoor or outdoor graphics.

Specifications

Weight (g/m ²)	Caliper (mic)	Caliper (mil)	Whiteness	Opacity
140	150	5.9	99	94

Order #	Width		Length		Square Foot
023R02347	1067 mm	42"	61 m	200 ft	700
023R02229	1600 mm	63"	61 m	200 ft	1050
3R14051	1372 mm	54"	61 m	200 ft	900

Wide Format

Solvent Inkjet Display Graphics Media

Outdoor Papers

Premium Satin Outdoor Papers 200 g/m²

High opaque, barrier-coated, heavyweight paper with an attractive semi-gloss finish. Gives impressive color brilliance and color density with excellent edge definition. It will stay flat in highly humid environments and has an outdoor life expectancy of three months, unlaminated. This paper is suitable for indoor and outdoor applications like photo presentation print-outs, general advertising, indoor and outdoor signs and posters, billboards and other outdoor graphics.

Specifications

Weight (g/m ²)	Caliper (mic)	Caliper (mil)	Whiteness	Opacity
200	220	8.7	98	99

Order #	Width		Length		Square Foot
023R02418	1067 mm	42"	50 m	164 ft	574
023R02237	1270 mm	50"	50 m	164 ft	684
023R02238	1600 mm	63"	50 m	164 ft	861

Self-Adhesive Vinyls

Gloss Self-Adhesive Vinyl (permanent adhesive) 80 and 100 mics

Economical PVC with a gray adhesive that gives extra opacity to prevent show-through from the substrate onto which vinyl is mounted. Suitable for flat or slightly curved surfaces and for short- to medium-term graphics, indoors or outdoors such as general signage, retail and event promotions trade show displays, showrooms and general merchandising displays.

Specifications

Caliper (mic)	Caliper (mil)
80	3.15
100	3.95

Order #	Caliper (mic)	Width		Length		Square Foot
023R02245	80	1600 mm	63"	50 m	164 ft	861
023R02247	100	1050 mm	42"	50 m	164 ft	574
023R02313	100	1370 mm	54"	50 m	164 ft	738

Wide Format

Solvent Inkjet Display Graphics Media

Self-Adhesive Vinyls

Matte Self-Adhesive Vinyl (removable adhesive) 100 mics

Economical PVC with clear, removable adhesive in a matte print surface for use indoors or outdoors. Suitable for short- or medium-term graphics, applied to flat or slightly curved surfaces, or where ease of removal or concern for the mounting substrate may be considerations. Perfect for general signage or merchandising displays, retail and event signage, promotions and trade show displays.

Specifications

Caliper (mic)	Caliper (mil)
100	3.95

Order #	Width		Length		Square Foot
023R02249	1050 mm	42"	50 m	164 ft	574
023R02316	1370 mm	54"	50 m	164 ft	684
023R02250	1600 mm	63"	50 m	164 ft	861

Banner Media

Banner Vinyl 13 oz/yd²

This medium-weight material, suitable for large front-lit signs and banners, consists of a tear-resistant polyester base fabric sandwiched between two layers of white vinyl to provide durability and flexibility for demanding outdoor applications. Available in both matte and gloss finish to best suit the application, and can be welded to form fully finished banners. Perfect for banner applications like retail and event promotions, walkways, supermarkets, sports arenas, general advertising and backdrops, signage and tradeshow.

Specifications

Weight (g/m ²)	Weight (lbs)	Caliper (mic)	Caliper (mil)
440	13	320	13

Gloss Order #	Matte Order #	Width		Length		Square Foot
3R14052	3R14055	966 mm	38"	25 m	82 ft	260
3R14053	3R14056	1372 mm	54"	25 m	82 ft	389
3R14054	3R14057	1600 mm	63"	50 m	164 ft	861

Wide Format

Solvent Inkjet Display Graphics Media

Banner Media

Heavy-Duty Banner Vinyl 13 oz/yd²

This medium-weight material, suitable for large signs and banners mounted under high-tension or exposed to heavy winds. It consists of a high strength tear-resistant polyester base fabric sandwiched between two layers of white vinyl to provide durability and flexibility for demanding outdoor applications. Available in a no-glare matte finish and can be welded or stitched to form fully finished banners. Perfect for banner applications like outdoor event promotions, walkways, supermarkets, sports arenas, general advertising, signage and tradeshow.

Specifications

Weight (g/m ²)	Weight (lbs)	Caliper (mic)	Caliper (mil)
440	13	390	15.4

Matte Order #	Width		Length		Square Foot
3R14045	991 mm	39"	50 m	164 ft	533
3R14046	1372 mm	54"	50 m	164 ft	738
3R14047	1600 mm	63"	50 m	164 ft	861

Equipment Supplies/Consumables

For the many ways you create documents.

A good working relationship between copying/printing technology and supplies is crucial to consistently producing superior documents. Xerox® Equipment Supplies are unsurpassed in the industry because so much of our research and planning goes into developing toner, developer, cartridges and fuser oils.



Xerox® Equipment Supplies and technology are made for each other. Literally.

Xerox designs a new machine and develops its equipment supplies, simultaneously. Joint development ensures all the different pieces work compatibly with your equipment—and with each other—mechanically, electrically, physically and chemically. No one makes equipment supplies that harmonize better with our technology than we do.



Xerox passes with flying colors (and our black and white is good, too).

We perform exhaustive testing on equipment supplies to assure reliable, high-quality performance. Over one million copies are produced using our supplies before they pass our stringent qualification process. This painstaking scrutiny ensures that you will see improved productivity, fewer paper jams, and impressive documents with vibrant color and solid, clear text.



Equipment Supplies/Consumables

Xerox® Metered (Cost per Copy) Supplies Replenishment Program

To order supplies included in the Metered/Cost per Copy contract, visit www.xerox.com/meteredsupplies or call 1-800-599-2198.

Which supplies are included?

Monochrome Equipment—Black toner, copy cartridges and fuser oil

Color Equipment—Color toner(s)

How are these supplies obtained?

Monochrome Equipment—Supplies are ordered automatically by the Xerox Automatic Replenishment System

Color Equipment—Supplies are ordered by the customer by contacting the Metered Supplies Customer Support Center. Some of the newer color equipment models can be automatically replenished. Upon calling for supplies, customers with newer, enabled equipment will be notified and automatic replenishment will be enabled at that time.

When should automatic shipments be expected?

Once a month, the automatic replenishment system will review each machine on automatic replenishment to calculate the need for supplies using meter reads, supply consumption data sent by the machine and past shipments. If a shipment is needed the system will automatically ship it.

When and how to contact the metered supplies customer support center

When/Why

- To order supplies covered under metered/CPC contracts that are not automatically replenished
- To order additional supplies covered under metered/CPC contracts that are automatically replenished
- To fine tune the amount of supplies being shipped by the Automatic Replenishment System
- To return excess supplies received as part of the metered/CPC contract

You will need

- The serial number(s) of the equipment receiving the supplies
- A count of supplies currently on hand

How to Register/Activate Online Ordering

Visit www.xerox.com/meteredsupplies to register and activate your account

- Enter a valid email address associated with your Metered Supplies account
- Enter a valid serial number that is currently eligible for Metered Supplies
- Please note that all entries will be verified with our records

Once your account is activated you will be able to:

- Order metered supplies
- View your order history

Questions?

Contact the Metered Supplies Customer Support Center at 1-800-599-2198 / 7:00 am to 6:00 pm CST

Other information about the program

- A metered/CPC contract provides the use of these supplies on a cost per copy basis. The actual supply items remain the property of Xerox until consumed. As such, inventory quantities kept at a customer location are at the discretion of Xerox. They may not be sold or used in other equipment.
- A metered /CPC contract requires meter reads be furnished periodically for billing purposes, but additional meter reads may be requested to validate the quantity of supplies requested.
- A metered/CPC contract requires providing periodic inventory counts of supplies. These counts may be requested when ordering supplies or via the periodic Xerox Inventory Audit.
- A metered/CPC contract requires the return of unused supplies covered under the contract at the time of equipment removal.
- A metered/CPC contract specifies that Xerox may invoice additional charges for excessive supply usage.

Contact Service North American Customer Support/Welcome Center at 1-800-822-2979 for

- Equipment service
- Defective supplies
- Orders for service modules such as drums and fuser modules

Global Document Outsourcing/Managed Services for Customers—please refer to your contract for the supplies ordering process.



One, two, three ways to recycle with the Xerox® Green World Alliance®.

We support waste-free practices under the hierarchy of “reduce, reuse, recycle.” We design product packaging and supplies that make efficient use of resources, reuse materials where feasible and recycle what can’t be reused. Our supplies recycling programs have kept millions of pounds of waste out of landfills. The Xerox Green World Alliance makes returning supplies a breeze.

1. Single (individual) returns

- On our web site, select an item by model or reorder number.
- Items are shipped back.
- Xerox pays return shipping for items on our Take Back list and all recycling costs.

2. Eco Box returns for over four items

- Order a kit of three boxes and bags—ships at no charge to you.
- Fill box with used supplies, seal and ship via UPS.
- Xerox pays for return shipping and all recycling costs.

3. Pallet returns for over 30 items

- Consolidate items on your own pallet.
- Complete bill of lading and schedule pickup with Ryder Logistics.
- Xerox pays for return shipping and all recycling costs.

Want to know more?

Ask us or visit www.xerox.com/gwa



© 2011 Xerox Corporation. All rights reserved. XEROX®, XEROX and Design® and Green World Alliance® are trademarks of Xerox Corporation in the United States and/or other countries.

Supplies Return Policy Overview

- Returned supplies must be in full, unopened cartons and in good resalable condition, except for damaged or defective returns.
- If Xerox cannot validate that the customer purchased their supplies directly from Xerox, the Customer must be able provide proof of purchase (Xerox shipping document or Xerox invoice). If not purchased directly from Xerox, return inquiries should be directed to the place of purchase.
- A 20% restocking fee applies due to customer errors and contract cancellations. Cost Per Copy supplies are not subject to this charge.
- Obsolete/Discontinued supply products are not accepted for physical return, but credit may be issued for eligible returns.

Supply Returns will be accepted up to 60 days from Supply Invoice for the following scenarios:

Xerox Error	Supply returns resulting from a Xerox error (shipped wrong product, shipped inaccurate quantity, etc.)
Non-Xerox Error (Customer Request)	Supply returns resulting from non-Xerox errors (ordered wrong products, ordered wrong quantity)
Damaged Supplies	Supply product materials that are damaged upon customer receipt (product has not been inserted in the machine).
Defective Supplies	Supply product materials or workmanship that Xerox identifies as defective will be accepted for replacement/credit at any time.

Supply Returns will be accepted up to 60 days from date of specific machine transaction for the following scenarios:

Equipment Exchange/Upgrade	Supply products purchased within the past 12 months that are no longer compatible as a result of a customer trade to other Xerox equipment. Supply returns will be accepted up to 60 days from date of equipment exchange/upgrade.
Equipment Outright Rental/Cancellation	Supply products purchased within the past 12 months that are no longer compatible as a result of an outright rental equipment cancel where the equipment has been returned to Xerox
Equipment Term Lease Expiration	Supply products purchased within the past 12 months that are no longer compatible as a result of an outright rental equipment term lease expiration where the equipment has been returned to Xerox
Equipment Sale Return	Supply products purchased within the past 12 months that become incompatible, as the result of an equipment sale return.
Cost Per Copy to Sold Price Plan Conversion	Supply products provided under a cost per copy plan must be returned back to Xerox when converting to a toner out or sold price plan. Customer is not eligible for credit since these supplies are Xerox property. Xerox reserves the right to invoice customer for cost per copy supplies that are not returned within 60 days of converting from Cost per Copy to Sold Price Plan.

For further information, please contact Xerox billing at the phone number listed on your invoice.

Supplies/Consumables

Reorder Numbers

Toner Supplies

Black and Color Toner

Reorder #	Description	Yield/Carton	% Area Coverage	Units/Carton
6R206	5090/DT135/5090S/5390/5690/4135/4635/6100/6115/6135/6155/6180 DP96/DP180/DT180/155/128 HLC	220,000	6	3
6R229	1065/5065/5365 Black Toner – Obsolete*	80,000	5	5
6R244	5018/5021/5028/5034/5328/5334/ 5624/5626/5818/5820/5828/5830/BK21 – Black	20,000	5	2
6R249	5018/5021/5028/5034/5328/5334/ 5624/5626/5818/5820/5828/5830/BK21 – Blue	10,000	5	1
6R258	5100/5800/5885/5895/5890/5900/5990/5995	150,000	5	2
6R296	4850/4890/DP350HC/DP390HC/DP184/DP92C – Black	180,000	5	6
6R297	4850/4890/DP350HC/DP390HC/DP184/DP92C – Red	260,000	1.5	3
6R299	4850/4890/DP350HC/DP390HC/DP184/DP92C – Green	260,000	1.5	3
6R301	1075/1090/4050/4090/4450/4650/5388/5680/5892/DP390/DT90	135,000	5	3
6R396	5337/5340/5350/5343/5352/5665/5837/5845C/5855C – Black	45,000	5	2
6R752	5614 Black Toner – Obsolete*	8,000	6	2
6R754	4850/4890/DP350HC/DP390HC/DP184/92C – Blue	260,000	1.5	3
6R755	4850/4890/DP350HC/DP390HC/DP184/92C – Cyan	260,000	1.5	3
6R816	4850/4890/DP350HC/DP390HC/DP184/92C – Magenta	260,000	1.5	3
6R819	4635MX/DP96MX/DP180MX/DP100MX/DP115MX/ DP135MX/DP155MX/DP180MX	396,000	5	3
6R825	4850/4890/DP350HC/DP390HC/DP184 – Cardinal	260,000	1.5	3
6R826	4850/4890/DP350HC/DP390HC/DP184/92C – Royal	260,000	1.5	3
6R828	4850/4890/DP350HC/DP390HC/DP184/92C – Violet	260,000	1.5	3
6R975	DocuColor 2045/2060/5252/6060 – Black	25,000	11.25	1
6R976	DocuColor 2045/2060/5252/6060 – Cyan	39,000	11.25	1
6R977	DocuColor 2045/2060/5252/6060 – Magenta	39,000	11.25	1
6R978	DocuColor 2045/2060/5252/6060 – Yellow	39,000	11.25	1
6R1007	Document Centre 240/255/265/460/470/480/490/ DP65/DP75/DP90/DT65/DT75/DT90/CC/WC Pro 65/75/90 (2 pack)	47,000	5	2
6R1046	Document Centre 555/545/535, CC/WC/WCPro 232/238/245/255, WCM35/45/55, WC5030/5050, WC5632/5638/5645/5655, WC Bookmark 40/55, WC5135/5150, WC5735/5740/5745/4755	73,000	6	2
6R1048	DP350/425/500/700/850/1000	240,000 in. ft	5	8
6R1049	DocuColor 12 – Black	17,500	5	2
6R1050	DocuColor 12 – Cyan	22,000	5	2

Toner cartons in this section may be combined to achieve quantity discount.

*Obsolete products are available until current inventory is depleted.

For Xerox® Supplies recycling information, please visit www.xerox.com

Supplies/Consumables

Reorder Numbers

Toner Supplies (continued)

Black and Color Toner

Reorder #	Description	Yield/Cartron	% Area Coverage	Units/Cartron
6R1051	DocuColor® 12 – Magenta	22,000	5	2
6R1052	DocuColor 12 – Yellow	22,000	5	2
6R1122	DocuColor 2240/1632/3535/CC/WC Pro 32/40 – Black	27,000	5	1
6R1123	DocuColor 2240/1632/3535/CC/WC Pro 32/40 – Cyan	16,000	5	1
6R1124	DocuColor 2240/1632/3535/CC/WC Pro 32/40 – Magenta	15,000	5	1
6R1125	DocuColor 2240/1632/3535/CC/WC Pro 32/40 – Yellow	16,000	5	1
6R1145	Xen1010/2101	41,500	5	1
6R1146	CC/WC/WC Pro 165/175, CC/WC/WC Pro 265/275, WC 5665/5675/5687, WC5765/5775/5790	90,000	6	2
6R1147	DT 75MX (2 Pack)	70,000	4	2
6R1153	WorkCentre® M24 – Black	27,000	5	1
6R1154	WorkCentre M24 – Cyan	15,000	5	1
6R1155	WorkCentre M24 – Magenta	15,000	5	1
6R1156	WorkCentre M24 – Yellow	15,000	5	1
6R1174	DP525/1050	240,000	3	4
6R1175	CC/WC/WCPro C2128/C2636/C3545, WC 7328/7336/7345/7346 – Black	26,000	5	1
6R1176	CC/WC/WCPro C2128/C2636/C3545, WC 7328/7336/7345/7346 – Cyan	16,000	5	1
6R1177	CC/WC/WCPro C2128/C2636/C3545, WC 7328/7336/7345/7346 – Magenta	16,000	5	1
6R1178	CC/WC/WCPro C2128/C2636/C3545, WC 7328/7336/7345/7346 – Yellow	15,000	5	1
6R1179	WC/CC M118/i	11,000	5	1
6R1184	CC/WC/WCP 123/128 – Black	30,000	5	1
6R1191	DT 180/155/128 – Blue HLC	301,000	1.5	3
6R1192	DT 180/155/128 – Red HLC	301,000	1.5	3
6R1193	DT 180/155/128 – Green HLC	301,000	1.5	3
6R1194	Xerox Nuvera® 100/120/144 /200/288 – MICR toner	90,000	5	1
6R1199	DocuColor 7000/8000 (AP) – Black	25,000	11.25	1
6R1200	DocuColor 7000/8000 (AP) – Cyan	39,000	11.25	1
6R1201	DocuColor 7000/8000 (AP) – Magenta	39,000	11.25	1
6R1202	DocuColor 7000/8000 (AP) – Yellow	39,000	11.25	1
6R1218	FaxCentre® 116/FC116L (1 Pack)	6,000	5	1
6R1219	DocuColor 240/242/250/252/260, WC 7655/7665/7676, WC7755/7765/7775 – Black Toner	30,000	5	1
6R1220	DocuColor 240/242/250/252/260, WC 7655/7665/7676, WC7755/7765/7775 – Yellow Toner	34,000	5	1

Toner cartons in this section may be combined to achieve quantity discount.

*Obsolete products are available until current inventory is depleted.

For Xerox® Supplies recycling information, please visit www.xerox.com

Supplies/Consumables

Reorder Numbers

Toner Supplies (continued)

Black and Color Toner

Reorder #	Description	Yield/Cartron	% Area Coverage	Units/Cartron
6R1221	DocuColor® 240/242/250/252/260, WC 7655/7665/7676, WC7755/7765/7775 – Magenta Toner	31,000	5	1
6R1222	DocuColor 240/242/250/252/260, WC 7655/7665/7676, WC7755/7765/7775 – Cyan Toner	34,000	5	1
6R1236	FaxCentre® 116/FC116L (2 Pack)	12,000	5	2
6R1237	4110 CP, 4590CP, 4110 EPS, 4590EPS, 4595 CP, 4112/4127 CP and EPS	75,000	6	1
6R1239	Xerox Nuvera® 100/120, Xerox Nuvera 144 Copier/Printer (conventional) toner	120,000	6	1
6R1246	DP525 MX	300,000	3%, linear ft	4
6R1247	DocuColor 5000AP – Black Toner	22,500	7.5	2
6R1248	DocuColor 5000AP – Cyan Toner	37,500	7.5	2
6R1249	DocuColor 5000AP – Magenta Toner	37,500	7.5	2
6R1250	DocuColor 5000AP – Yellow Toner	37,500	7.5	2
6R1255	DT 128/155/180 – Royal Blue HLC	301,000	1.5	3
6R1261	Xerox Nuvera 100/120/144/200/288 – EA toner	204,000	6	1
6R1267	WorkCentre® 7132/7232/7242 – Yellow Toner	8,000	5	1
6R1268	WorkCentre 7132/7232/7242 – Magenta Toner	8,000	5	1
6R1269	WorkCentre 7132/7232/7242 – Cyan Toner	8,000	5	1
6R1275	WorkCentre 4150 – Black Toner	20,000	5	1
6R1277	DT 128/155/180 – Cardinal Red HLC	301,000	1.5	3
6R1278	WC4118 Toner, FC2218	8,000	5	1
6R1279	650/1300 Continuous Feed Toner	259,000	3%, linear ft	2
6R1284	DT 180/155/128 – Cyan HLC	301,000	1.5	3
6R1296	DT128/155/180 – HLC Magenta Toner	301,000	1.5	1
6R1297	FC2121 Toner (1 pk)	6,000	5	1
6R1298	FC2121 Toner (2 pk)	12,000	5	2
6R1299	DT 180/155/128 – Yellow HLC	301,000	1.5	3
6R1300	iGen3® – Black toner	80,000	15	1
6R1301	iGen3 – Cyan toner	85,000	15	1
6R1302	iGen3 – Magenta toner	85,000	15	1
6R1303	iGen3 – Yellow toner	100,000	15	1
6R1304	495 Continous Feed Duplex Printer	55,000	3%, linear ft	1
6R1318	WC 7132/7232/7242 – Black Toner	24,300	5	1
6R1321	490 / 980 Color Continuous Feed – Black toner	197,000	4%, linear ft	2

Toner cartons in this section may be combined to achieve quantity discount.

*Obsolete products are available until current inventory is depleted.

For Xerox® Supplies recycling information, please visit www.xerox.com

Supplies/Consumables

Reorder Numbers

Toner Supplies (continued)

Black and Color Toner

Reorder #	Description	Yield/Carton	% Area Coverage	Units/Carton
6R1322	490 / 980 Color Continuous Feed – Cyan toner	395,000	2%, linear ft	2
6R1323	490 / 980 Color Continuous Feed – Magenta toner	395,000	2%, linear ft	2
6R1324	490 / 980 Color Continuous Feed – Yellow toner	395,000	2%, linear ft	2
6R1325	DT 128/155/180 – Violet HLC	301,000	1.5	3
6R1358	iGen4® – Black Toner	90,000	15	1
6R1359	iGen4 – Cyan Toner	95,000	15	1
6R1360	iGen4 – Magenta Toner	115,000	15	1
6R1361	iGen4 – Yellow Toner	115,000	15	1
6R1383	700 Digital Color Press – Black Toner	20,000	7.5	1
6R1384	700 Digital Color Press – Cyan Toner	22,000	7.5	1
6R1385	700 Digital Color Press – Magenta Toner	21,000	7.5	1
6R1386	700 Digital Color Press – Yellow Toner	22,000	7.5	1
6R1395	WC 7425/7428/7435 – Black Toner	26,000	5	1
6R1396	WC 7425/7428/7435 – Yellow Toner	15,000	5	1
6R1397	WC 7425/7428/7435 – Magenta Toner	15,000	5	1
6R1398	WC 7425/7428/7435 – Cyan Toner	15,000	5	1
6R1431	Docucolor® 7002/8002 – Black Toner	25,000	11.25	1
6R1432	Docucolor 7002/8002 – Cyan Toner	39,000	11.25	1
6R1433	Docucolor 7002/8002 – Magenta Toner	39,000	11.25	1
6R1434	Docucolor 7002/8002 – Yellow Toner	39,000	11.25	1
6R1446	iGen4 Special Formulation Magenta (limited use, license purchase required)	115,000	15%	1
6R1457	WC 7120 Black Toner	22,000	5%	1
6R1458	WC 7120 Yellow Toner	15,000	5%	1
6R1459	WC 7120 Magenta Toner	15,000	5%	1
6R1460	WC 7120 Cyan Toner	15,000	5%	1
6R1475	Xerox® Color 800 / 1000 Black Toner	50,000	7.5%	1
6R1476	Xerox® Color 800 / 1000 Cyan Toner	55,000	7.5%	1
6R1477	Xerox® Color 800 / 1000 Magenta Toner	51,000	7.5%	1
6R1478	Xerox® Color 800 / 1000 Yellow Toner	55,000	7.5%	1
6R1479	Xerox® Color 800 / 1000 Clear Toner	55,000	7.5%	1
6R1513	WorkCentre® 7545 / 7556 Black Toner	26,000	5.0%	1
6R1514	WorkCentre 7545 / 7556 Yellow Toner	15,000	5.0%	1

Toner cartons in this section may be combined to achieve quantity discount.

*Obsolete products are available until current inventory is depleted.

For Xerox® Supplies recycling information, please visit www.xerox.com

Supplies/Consumables Reorder Numbers

Toner Supplies (continued)

Black and Color Toner

Reorder #	Description	Yield/Carton	% Area Coverage	Units/Carton
6R1515	WorkCentre® 7545 / 7556 Magenta Toner	15,000	5.0%	1
6R1516	WorkCentre 7545 / 7556 Cyan Toner	15,000	5.0%	1
6R1525	Xerox® Color 550 / 560 Black Toner	30,000	5.0%	1
6R1526	Xerox® Color 550 / 560 Yellow Toner	34,000	5.0%	1
6R1527	Xerox® Color 550 / 560 Magenta Toner	32,000	5.0%	1
6R1528	Xerox® Color 550 / 560 Cyan Toner	34,000	5.0%	1
106R365	DWC Pro 635/645/657	—	—	1
106R367	DWC Pro 535/545 – Obsolete*	—	—	2
106R373	DWC Pro 735/745	—	—	1
106R402	DWC Pro 555/575	6,000	4	1
106R404	DWC Pro 665/685/765/785	3,000	4	1
106R445	WCP 416	10,000	4	1
106R584	WCP 412/FaxCentre® F12/WC M15	6,000	4	1
106R647	WCP 421	15,000	4	1
106R1047	CopyCentre® C20/WorkCentre M20/M20i	8,000	5	1
106R1306	WC 5222/5225/5230 Black Toner (Sold configuration)	30,000	5	1
106R1316	WC 6400 – Black High Capacity Toner Cartridge	12,000	ISO/IEC 19798	1
106R1317	WC 6400 – Cyan High Capacity Toner Cartridge	16,500	ISO/IEC 19798	1
106R1318	WC 6400 – Magenta High Capacity Toner Cartridge	16,500	ISO/IEC 19798	1
106R1319	WC 6400 – Yellow High Capacity Toner Cartridge	16,500	ISO/IEC 19798	1
106R1320	WC 6400 – Cyan Standard Capacity Toner Cartridge	8,000	ISO/IEC 19798	1
106R1321	WC 6400 – Magenta Standard Capacity Toner Cartridge	8,000	ISO/IEC 19798	1
106R1322	WC 6400 – Yellow Standard Capacity Toner Cartridge	8,000	ISO/IEC 19798	1
106R1409	WC 4250/4260 – Black Toner	25,000	ISO/IEC 19752	1
106R1485	WC 3210/3220 – Standard Capacity Toner Cartridge	2,000	ISO/IEC 19752	1
106R1486	WC 3210/3220 – High Capacity Toner Cartridge	4,100	ISO/IEC 19752	1
106R1528	WorkCentre 3550 Std Capacity Print Cartridge	5,000	ISO/IEC 19752	1
106R1530	WorkCentre 3550 High Capacity Print Cartridge	11,000	ISO/IEC 19752	1
108R660	WorkCentre C2424 – Cyan (3 Pack)	3,400	5	3
108R661	WorkCentre C2424 – Magenta (3 Pack)	3,400	5	3
108R662	WorkCentre C2424 – Yellow (3 Pack)	3,400	5	3

Toner cartons in this section may be combined to achieve quantity discount.

*Obsolete products are available until current inventory is depleted.

For Xerox® Supplies recycling information, please visit www.xerox.com

Supplies/Consumables Reorder Numbers

Toner Supplies (continued)

Black and Color Toner

Reorder #	Description	Yield/Carton	% Area Coverage	Units/Carton
108R663	WorkCentre® C2424 – Black (3 Pack)	3,400	5	3
108R664	WorkCentre C2424 – Black (6 Pack)	6,800	5	6
108R829	ColorQube® 9201/9202/9203 – Cyan solid ink	37,000	ISO/IEC 24711	4
108R830	ColorQube 9201/9202/9203 – Magenta solid ink	37,000	ISO/IEC 24711	4
108R831	ColorQube 9201/9202/9203 – Yellow solid ink	37,000	ISO/IEC 24711	4
108R832	ColorQube 9201/9202/9203 – Black solid ink	40,000	ISO/IEC 24711	4
108R926	ColorCube 8570 Cyan Solid Ink	4,400	ISO/IEC 24711	2
108R927	ColorCube 8570 Magenta Solid Ink	4,400	ISO/IEC 24711	2
108R928	ColorCube 8570 Yellow Solid Ink	4,400	ISO/IEC 24711	2
108R929	ColorCube 8570 Black Solid Ink (2 pack)	4,300	ISO/IEC 24711	2
108R930	ColorCube 8570 Black Solid Ink (4 pack)	8,600	ISO/IEC 24711	2
108R950	ColorCube 8870 Cyan Solid Ink	17,300	ISO/IEC 24711	6
108R951	ColorCube 8870 Magenta Solid Ink	17,300	ISO/IEC 24711	6
108R952	ColorCube 8870 Yellow Solid Ink	17,300	ISO/IEC 24711	6
108R953	ColorCube 8870 Black Solid Ink	16,700	ISO/IEC 24711	6

Toner cartons in this section may be combined to achieve quantity discount.

*Obsolete products are available until current inventory is depleted.

For Xerox® Supplies recycling information, please visit www.xerox.com

Supplies/Consumables Reorder Numbers

Developer Supplies

Black and Color Developer

Reorder #	Description	Yield/Carton	% Area Coverage	Units/Carton
5R161	5090/DT135/4135/4635/5390/5090S/5690/6115/6135/6180/DP96/ DP180/6100/6155	750,000	—	2
5R177	5100/5800/5885/5890/5895/5900/5990/5995	500,000	—	1
5R302	1075/1090/5388/5680/4050/4090/4450/4650/5892	500,000	—	1
5R311	5337/5340/5350/5343/5352/5665/5837/5845C/5855C Black	320,000	—	1
5R318	1065/5065/5365 Black Developer – Obsolete*	300,000	—	1
5R573	4635MX/DP96MX/DP100MX/DP115MX/DP135MX/DP155MX/DP180MX	750,000	—	2
5R629	DocuColor 2045/2060/5252/6060, 7000/8000 Black	400,000	—	1
5R630	DocuColor 2045/2060/5252/6060, 7000/8000 Cyan	400,000	—	1
5R631	DocuColor 2045/2060/5252/6060, 7000/8000 Magenta	400,000	—	1
5R632	DocuColor 2045/2060/5252/6060, 7000/8000 Yellow	400,000	—	1
5R646	DP350/DP425/DP500/DP700/DP850/DP1000	2,400,000	linear ft	2
5R683	DP525/1050	2,800,000	linear ft	2
5R707	DP525 MX	1,400,000	linear ft	1
5R711	DocuColor 5000AP Black Developer	300,000	--	1
5R712	DocuColor 5000AP Cyan Developer	300,000	--	1
5R713	DocuColor 5000AP Magenta Developer	300,000	--	1
5R714	DocuColor 5000AP Yellow Developer	300,000	--	1
5R718	650 / 1300 Continuous Feed Developer	115,000	linear ft	2
5R722	495 Continuous Feed Developer	1,000,000	linear ft	1
5R726	490 / 980 Color Continuous Feed Black Developer	1,440,000	linear ft	1
5R727	490 / 980 Color Continuous Feed Cyan Developer	1,080,000	linear ft	1
5R728	490 / 980 Color Continuous Feed Magenta Developer	1,080,000	linear ft	1
5R729	490 / 980 Color Continuous Feed Yellow Developer	1,080,000	linear ft	1
5R737	Docucolor 7002/8002 Black Developer	400,000	—	1
5R738	Docucolor 7002/8002 Cyan Developer	400,000	—	1
5R739	Docucolor 7002/8002 Magenta Developer	400,000	—	1
5R740	Docucolor 7002/8002 Yellow Developer	400,000	—	1
5R742	Xerox Color 800 / 1000 Black Developer	2,000,000	—	1
5R743	Xerox Color 800 / 1000 Cyan Developer	2,000,000	—	1
5R744	Xerox Color 800 / 1000 Magenta Developer	2,000,000	—	1
5R745	Xerox Color 800 / 1000 Yellow Developer	2,000,000	—	1
5R746	Xerox Color 800 / 1000 Clear Developer	2,000,000	—	1

Developer cartons in this section may be combined to achieve quantity discount.

*Obsolete products are available until current inventory is depleted.

Supplies/Consumables

Reorder Numbers

Cartridge Supplies

Cartridges – Print/Drum/Fuser/Miscellaneous

Reorder #	Description	Yield/Carton	% Area Coverage	Units/Carton
13R589	WC/CC/WCP 123/128, WC/CC M118/i	60,000	5	1
13R599	FaxCentre 110 (1 Pack)	3,000	5	1
13R601	WorkCentre PE120/PE120i Std Capacity	3,500	5	1
13R606	WorkCentre PE120/120i Hi Capacity	5,000	5	1
13R609	FaxCentre 110 (2 Pack)	6,000	5	2
13R621	WorkCentre PE 220	3,000	ISO/IEC 19752	1
13R623	WC4150 SMARTKITDRUM	55,000	—	1
13R628	FC2121 Drum	20,000	—	1
101R203	PRO 635/645/657	10,000	4	1
101R434	WC 5222/5225/5230 Standard Drum	50,000	5	1
101R435	WC 5222/5225/5230 High Capacity Drum	80,000	5	1
106R1368	WC 6400 Waste Cartridge	44,000	—	2
108R656	Workcentre C2424 Standard Maintenance Kit	10,000	—	1
108R657	Workcentre C2424 High Capacity Maintenance Kit	30,000	—	1
108R774	WC 6400 Black Imaging Unit	30,000	—	1
108R775	WC 6400 Cyan Imaging Unit	30,000	—	1
108R776	WC 6400 Magenta Imaging Unit	30,000	—	1
108R777	WC 6400 Yellow Imaging Unit	30,000	—	1
108R815	WC 6400 Transfer Roll	120,000	—	1
108R866	WC 6400 ADF Roll	100,000	—	1
109R784	ColorQube 8570/8870 Std Cap Maintenance Kit	10,000	—	1
109R783	ColorQube 8570/8870 High Cap Maintenance Kit	30,000	—	1
113R161	5018/5021/5028/5034/5328 Environmental Partnership	25,000	5	1
113R180	Xerox 212/214 Environmental Partnership	14,000	6	1
113R181	Xerox 212/214 – Obsolete*	14,000	6	1
113R288	DWC Pro 535/545 (replaces 113R152)	8,000	4	1
113R298	DWC Pro 735/DWC Pro 745	14,000	4	1
113R315	DC332/340/425/430/432/440	23,000	5	1
113R317	DC332/340/425/430/432/440 Environmental Partnership	23,000	5	1
113R457	DWC Pro 555/575	20,000	4	1
113R459	DWC Pro 665/685/765/785	10,000	4	1
113R482	DC220/230/420/426/Digital Bookmark Environmental Partnership	26,000	5	1

Xerographic cartridges in this section may be combined to achieve quantity discount.

*Obsolete products are available until current inventory is depleted.

Supplies/Consumables

Reorder Numbers

Cartridge Supplies (continued)

Cartridges – Print/Drum/Fuser/Miscellaneous

Reorder #	Description	Yield/Carton	% Area Coverage	Units/Carton
113R483	DC220/230/420/426/Digital Bookmark	26,300	5	1
113R629	WCP 416/421 (replaces 113R475)	30,000	4	1
113R632	WCP 580	2,500	4	1
113R655	FC116/FC116L	20,000	—	1
113R663	WC M15/WCP 412/FC F12 (replaces 113R506)	15,000	5	1
113R667	Pe16	3,500	5	1
113R671	Copy Centre C20/WorkCentre M20/M20i/WorkCentre 4118/FC2218	20,000	5	1
113R755	WorkCentre 4250/4260 Drum Cartridge	80,000	—	1
115R59	WC 6400 110 Volt Fuser	150,000	—	1

Xerographic cartridges in this section may be combined to achieve quantity discount.

*Obsolete products are available until current inventory is depleted.

Fuser Supplies

Fuser Oil – Fuser Agent – Fuser Lubricant

Reorder #	Description
8R983	Fuser Lubricant (Two Tubes, 200 ml per tube) 1075, 1090, DocuTech 90, 5388, 5680, 4050, 4090, 4450, 4650, 4850, 4890, DP350HC, DP390HC, DP184, DP92C
8R2955	Fuser Agent (1 Liter Bottle)
8R3903	Fuser Agent (Six 1 Liter Bottles) 5335, 9900, 4235, DC-35, 4635, 4635MX, 1065, 5065, 5365, 5090S2, 5390, 5690, DocuTech 135, 4135, 6100, 6135, 6155, 6180, DP180, DP96, DP96MX, DP100MX, DP115MX, DP135MX, DP155MX, DP180MX
8R3692	Fuser Web (1 Web/Ctn.) 5100, 5885
8R3826	Fuser Web (6 Web/Ctn.) 5100, 5885
8R3993	Fuser Agent II for use in 5750, 5760, 5765, 5790, 5799, DocuColor 40, DocuColor 5750, Office 6, DocuColor 30, DocuColor 2045/2060
8R4077	Fuser Shield 1065, 5065, 5365, 5090S2, 5390, 5690, DT135, DP180, 6115, DP96, Xerox 180/155/128 HLC (single pack)
8R7618	Fuser Shield 1065, 5065, 5365, 5090S2, 5390, 5690, DT135, DP180, 6115, DP96, Xerox 180/155/128 HLC (six pack)
8R7854	Fuser Web (1 Web/Ctn.) 5800, 5895, 5890, 5900, 5990, 5995
8R7975	Fuser Oil DocuColor 12, DCCS 50
8R12936	Fuser Fluid for iGen3 and iGen4, replaced by 8R13095
8R12938	Xerox 180/155/128 Fuser Blend (1 Liter Bottle)
8R12939	Xerox 180/155/128 Fuser Blend (6 Liter Bottle)

Fuser cartons in this section may be combined to achieve quantity discount.

*Obsolete products are available until current inventory is depleted.

Supplies/Consumables

Reorder Numbers

Fuser Supplies (continued)

Fuser Oil – Fuser Agent – Fuser Lubricant

Reorder #	Description
8R13030	Fuser Fluid II for iGen3 and iGen4, replaced by 8R13096
8R13031	DC5000, DC5000AP, DC7000/8000, DC7000AP/8000AP Fuser Oil
8R13095	Fuser Fluid for iGen3 and iGen4 (2/Ctn.)
8R13096	Fuser Fluid II for iGen3 and iGen4 (2/Ctn.)
8R13037	DP525/525MX, DP500/DP1000 – replaces 8R12931 and 8R12874
8R13038	DP350/DP425/DP700/DP850 – replaces 8R12891

Fuser cartons in this section may be combined to achieve quantity discount.

*Obsolete products are available until current inventory is depleted.

Binder Supplies

Binder Tape

(For the Xerox® Tape Binder)

Reorder #	Description
8R13046	Black Binder Tape Strips (100 11 in. strips/cassette; 5 cassettes/carton)
8R13047	White Binder Tape Strips (100 11 in. strips/cassette; 5 cassettes/carton)
8R13048	Dark Blue Binder Tape Strips (100 11 in. strips/cassette; 5 cassettes/carton)

Binder Tape (For 5090, 5390, 5690,

6135, 6155, 6180, DocuTech 135, 6100, 6155)

Reorder #	Description
8R7186	Black Binder Tape (414 feet = 445 11" binds)
8R7187	White Binder Tape (414 feet = 445 11" binds)
8R7188	Gray Binder Tape (414 feet = 445 11" binds)
8R7189	Blue Binder Tape (414 feet = 445 11" binds)

Ellipse Binder Elements

(For the eBinder 200)

Reorder #	Description
3R6859	Ellipse Elements – Black (200 binder strips per carton)
3R6860	Ellipse Elements – White (200 binder strips per carton)
3R6861	Ellipse Elements – Clear (200 binder strips per carton)
3R6862	Ellipse Elements – Navy (200 binder strips per carton)
3R6863	Clear Cover (100/carton) – for use only with Xerox Nuvera® products

Supplies/Consumables

Reorder Numbers

Staple and Stitcher Supplies

Staples and Stitcher Wire – Copiers and Printers

Reorder #	Description	Yield/Carton	% Area Coverage/Other	Units/Carton
8R566	Signature Booklet Maker	50,000	Staples	2
8R1174	1075, 1090, 5388, 5090, 5090S, 5690, DT135, 5390, 4050, 6180, 6135, 6100, DP92C, 4850, 4890	32,000	Staples	1
8R1177	1050, 1052, 5050, 5053	10,000	Staples	2
8R2253	5034, 5065, 5365, 1065, 5046, 5335, 5053, 5328, 5050, 5340, 5350, 5343, 5352, 5328/5334 10 bin (Prod. Code 9N2), 5334 20 bin (Prod. Code 5EM), 5021 (9D8), 5337, 5818, 5820, BK21	25,200	Staples	5
8R3625	5100	20,000	Staples	4
8R3838	ASF 100, ASF 135, ASF DC40, ASF DC30	20,000	Staples	4
8R4023	5334, 5340, 5345, 5350, 5343, 5352, 5355, 5665, 5337, 5855C, 5385, 5390, 5365, 5380, 5388, 5690, 6180, 6135, 6100, 6155	25,000	Staples	5
8R7628	5328/5334, 5624, 5626, 5828, 5830	16,000	Staples	8
8R7644	5680, 5624, 5626, 5828, 5830, 5837, 5845C, 5855C, 5892, 5665 (MPS), 5890, 5990, WCP40, WCP32, WCP416, DC3535, WCM24, 5380, 5385, 5388, 5680, CC/WC Pro C2128, C2636, C3545	20,000	Staples	4
8R7809	5800, 5895, 5900, 5995	20,000	Staples	4
8R12602	SBM II Booklet Maker, Squarefold Booklet Maker Dp In-Line Stapler (50 sheet), Colorworks 500 (DC5000/DC5000AP), Colorworks 2000 (DC6060), M/C iGen 3, Xerox Nuvera SquareFold Booklet Maker, Colorworks 8000 (DC7000/DC8000, DC7000AP/8000AP), Horizons Colorworks and Colorworks Pro (5000AP, 7000AP, 8000AP, 6060, DC 7002/8002)	15,000	Staples	3
8R12724	DC12, DCCS 50, Xen1010	15,000	Staples	3
8R12799	DC2045/2060/5252, DC5000/DC5000AP, DC6060, DC7000/8000AP, DC7002/8002	15,000	Staples	3
8R12897	490, CC/WC Pro 65/75/90, Xerox Nuvera 100/120, CC/WC/WC Pro 165/175, CC/WC/WC Pro 232/238/245/255/265/275, WC 5632/5638/5645/5655/5665/5675 Pro and HVF with booklet maker, WC 5222/5225/5230, WC5740/5745/5755/5765/5775/5790	16,000	Staples	8
8R12898	Staple Refills (100 Sheet Capacity) for the 8R12912	15,000	Staples	3
8R12912	Staple Cartridge (100 Sheet Capacity) – 470, 480, 490, CC/WC Pro 65/75/90, Xerox Nuvera 100/120, 2101, 4110, 4590, WC5655/5665/5675/5687 HVF, WC5740/5745/5755/5765/5775/5790	5,000	Staples	1
8R12915	DC1632, DC2240, DC3535, CC32, CC40, WC32, WC40, WCP32, WCP40, WCM24, CC/WC Pro C2128, C2636, C3545, CC/WC C123, C128, WC7132/7232/7242, WC 7328/7336/7345/7346	15,000	Staples	3
8R12919	Staple Cartridge (50 Sheet Capacity) – Xerox Nuvera 100/120, 2101, 4110, 4590	5,000	Staples	1

*Obsolete products are available until current inventory is depleted.

Supplies/Consumables

Reorder Numbers

Staple and Stitcher Supplies (continued)

Staples and Stitcher Wire – Copiers and Printers

Reorder #	Description	Yield/Carton	% Area Coverage/Other	Units/Carton
8R12920	Staple Refills (50 Sheet Capacity) for the 8R12919	15,000	Staples	3
8R12922	Dp In-Line (75 sheet)	15,000	Staples	3
8R12925	2101, CC/WC Pro C2128, C2636, C3545, 2101, 4110, DC240/242/250/252/260, 4590, DC 240/250, WC 7655/7665/7675, 4595 Copier/Printer, 4112/4127 CP and EPS, WC 7328/7336/7345/7346, WC 7755/7765/7775, Xerox Color 800/1000	20,000	Staples	4
8R12941	Staple Refills for the 8R12964	15,000	Staples	3
8R12964	Staple Cartridge – CC/WC Pro C2128, C2636, C3545, DC240/242/250/252/260, CC/WC/WC Pro 232, 238, 245, 255, 265, 275, DC3535, WCM24, WC7655/7665/7675, CC/WCP 55, WC7132/7232/7242, WC5030/5050, WC 7328/7336/7345/7346, WC 5632/5638/5645/5655/5665/5675/5687, WC Bookmark 40/55, WC 5222/5225/5230, WC 5135/5150, WC7755/7765/7775, WCS735/5745/5755/5765/5775/5790	5,000	Staples	1
8R13033	Xerox Nuvera 100/120, 144, 200, and 288 – 100 sheet capacity	15,000	Staples	3
8R13034	Xerox Nuvera 100/120, 144 200, 288 – 30 sheet capacity	15,000	Staples	3
8R13041	Staple Cartridge/Waste Container for the 4110/4590 EPS, 4110/4590 Copier Printers ordered after 2/15/07, DC 242/252/260, 4595 Copier/Printer, 7655/7665/7675, 4112/4127 CP and EPS, WC 7755/7765/7775, Xerox Color 800/1000	20,000	Staples	4
108R53	4235, 5345, 5355, 5365, CC/WC Pro 65/75/90, DCS35, DC220, DC230, DC255, DC265, DC240, DC332, DC340, DC420, DC425, DC426, DC430, DC432, DC440, DC460, DC470, DC480, DC490, DP/DT65/75/90, 4110 convenience stapler	15,000	Staples	3
108R152	DC40 and DC30 w/ss, DC12, DCCS50, 4110 convenience stapler	15,000	Staples	3
108R493	DC555, DC545, DC535, CC35, CC45, CC55, M35, M45, M55, WCP35, WCP45, WCP55, CC/WC165, CC/WC175, CC/WC/WC Pro 232, 238, 245, 255, 265, 275, WC5030/5050, WC5632/5638/5645/5655/5665/5675 Office and Pro Finisher, WC Bookmark 40/55, WC 5135/5150, WCS735/5745/5755/5765/5775	15,000	Staples	3
108R535	Staple Refills for the 108R682	9,000	Staples	3
108R682	WC Pro 232/238/245 Basic Office Finisher, WC5632/5638/5645 Basic Office Finisher, WC Bookmark 40/55 Basic Office Finisher WC 5735/5740/5745	3,000	Staples	1
108R813	Staples for WC 6400 – discontinued, replaced by 8R12941	15,000	Staples	3

*Obsolete products are available until current inventory is depleted.

Supplies/Consumables

Reorder Numbers

Cleaning Agents and Miscellaneous Supplies

Xerox® GBC AdvancedPunch Die Options

Reorder #	Description
8R13066	PB 19 Hole, Letter (Plastic Bind, Comb Bind)
8R13067	C4 44 Hole, Letter (Coil Bind)
8R13068	W2 21 Square Hole, Letter (Wire Bind)
8R13069	W3 32 Square Hole, Letter (Wire Bind)
8R13070	VB 11 Hole, Letter (Velo Bind)
8R13071	PC 32 Hole, Letter (ProClick)
8R13072	3 Hole Letter (3 Ring Bind)

Cleaning Materials

Reorder #	Description
8R27	Film Remover (1 qt can, 6 per carton)
8R3669	Platen Glass Cleaner – contains 6 – 4 oz bottles of non-abrasive platen glass cleaner. This is the cleaner recommended for use on all platen glass with special optical coatings.
8R3671	Document Handler Antistatic Fluid – contains 6 – 125 ml bottles. Use on platen glass of machines with document handlers to eliminate jamming caused by static buildup.
8R3674	Xerox Formula A Cleaner – carton of 10 – 8 oz bottles
8R7630	Xerox Toner Cleaner – contains 4 – 8 oz bottles

Copier/Printer Products

Reorder #	Description
108R703	ColorWorks 8000 Trim Bag (5 Bags) for use in DC7000/8000/7000AP/8000AP, Horizons Colorworks and Colorworks Pro (5000AP, 7000AP, 8000AP, 6060, DC 7002/8002)
109R658	DC460/470/480/490 Tab Insert Kit

Paper Cassettes

Reorder #	Description
8R13032	iGen Tab Guide
109R1	8.5" x 11" Adjustable for 5328/5334/5624/5626/5828/5830
109R2	5.5" x 8.5" Fixed for 5328/5334/5624/5626/5828/5830/ Bookmark 21



Supplies/Consumables Reorder Numbers

Phaser® Equipment Supplies

Solid Ink

Machine	Product	Toner Cartridge/ Ink Reorder #	Toner/Ink Yield Pages
Phaser 860	ColorStix II – 3 Free Black	016190201	4,200
	ColorStix II – 5 Cyan, 2 Free Black	016190301	7,000
	ColorStix II – 5 Magenta, 2 Free Black	016190401	7,000
	ColorStix II – 5 Yellow 2 Free Black	016190501	7,000
	ColorStix II – 5 Black	016201900	7,000
	Maintenance Kit, Extended	016193200	40,000
	Maintenance Kit, Standard	016193300	10,000
	Waste Ink Tray Insert	436041500	N/A
Phaser 8200	ColorStix Ink – 5 Black	016204000	7,000
	ColorStix Ink – 2 Cyan	016204100	2,800
	ColorStix Ink – 2 Magenta	016204200	2,800
	ColorStix Ink – 2 Yellow	016204300	2,800
	ColorStix Ink – 10 Black	016204400	14,000
	ColorStix Ink – 5 Cyan	016204500	7,000
	ColorStix Ink – 5 Magenta	016204600	7,000
	ColorStix Ink – 5 Yellow	016204700	7,000
	Extended Maintenance Kit (Maintenance Roller/Counter)	016193200	40,000
	Standard Maintenance Kit (Maintenance Roller/Counter)	016193300	10,000
	Ink Waste Tray	436041500	N/A
	Cleaning Kit (common with Phaser 8560)	016184500	N/A
Phaser 8400	Genuine Xerox Solid Ink 8400 – Black (3 Pack)	108R00604	3,400
	Genuine Xerox Solid Ink 8400 – Cyan (3 Pack)	108R00605	3,400
	Genuine Xerox Solid Ink 8400 – Magenta (3 Pack)	108R00606	3,400
	Genuine Xerox Solid Ink 8400 – Yellow (3 Pack)	108R00607	3,400
	Genuine Xerox Solid Ink 8400 – Black (6 Pack)	108R00608	6,800
	Standard Capacity Maintenance Kit	108R00602	10,000
	High Capacity Maintenance Kit	108R00603	30,000
	Ink Waste Tray	109R00736	N/A

¹Declared yield in accordance with ISO/IEC 24711. Yield will vary based on image, area coverage and print mode.

Supplies/Consumables Reorder Numbers

Phaser® Equipment Supplies (continued)

Solid Ink

Machine	Product	Toner Cartridge/ Ink Reorder #	Toner/Ink Yield Pages
Phaser 8500/8550	Black Solid Ink (3)	108R00668	3,000
	Cyan Solid Ink (3)	108R00669	3,000
	Magenta Solid Ink (3)	108R00670	3,000
	Yellow Solid Ink (3)	108R00671	3,000
	Black Solid Ink (6)	108R00672	6,000
	Std Cap Maint Kit (common with 8560/8560MFP)	108R00675	10,000
	Ext Cap Maint Kit – (8550 and 8560/8560MFP only, not 8500)	108R00676	30,000
	Toner Waste Tray (common with Phaser 8560)	109R00754	N/A
Phaser 8560/8560MFP	Black Solid Ink (3 sticks)	108R00726	3,400 ¹
	Cyan Solid Ink (3 sticks)	108R00723	3,400 ¹
	Magenta Solid Ink (3 sticks)	108R00724	3,400 ¹
	Yellow Solid Ink (3 sticks)	108R00725	3,400 ¹
	Black Solid Ink (6 sticks)	108R00727	6,800 ¹
	Std Cap Maintenance Kit (common with 8500/8550/8560)	108R00675	10,000
	Ext Cap Maint Kit (common with 8550/8560)	108R00676	30,000
	Toner Waste Tray (common with Phaser 8500/8550/8560)	109R00754	N/A
Cleaning Kit (common with 8200)	016184500	N/A	
Phaser 8860	Cyan Solid Ink (6 sticks)	108R00746	14,000 ¹
	Magenta Solid Ink (6 sticks)	108R00747	14,000 ¹
	Yellow Solid Ink (6 sticks)	108R00748	14,000 ¹
	Black Solid Ink (6 sticks)	108R00749	14,000 ¹
	Extended Capacity Maintenance Kit	113R00736	30,000
	Waste Tray	109R00754	N/A
	Cleaning Kit	016184500	N/A

¹Declared yield in accordance with ISO/IEC 24711. Yield will vary based on image, area coverage and print mode.

Supplies/Consumables Reorder Numbers

Phaser® Equipment Supplies

Color Laser

Machine	Product	Toner Cartridge/ Ink Reorder #	Toner/Ink Yield Pages
Phaser 750	Toner, Cyan, High Capacity	016180000	10,000
	Toner, Magenta, High Capacity	016180100	10,000
	Toner, Yellow, High Capacity	016180200	10,000
	Toner, Black, High Capacity	016180301	12,000
	Toner, Cyan, Standard Capacity	016180400	4,000
	Toner, Magenta, Standard Capacity	016180500	4,000
	Toner, Yellow, Standard Capacity	016180600	4,000
	Toner, Black, Standard Capacity	016180701	5,000
	Main Charge Grid	016166500	30,000
	Fuser, 110 Volt – replaces 016183900	115R00053	45,000
	Color Imaging Unit	016184100	60,000
	Transfer Unit	016184200	80,000
	Fuser Roll	016184300	15,000
Phaser 6100	Toner Cartridge, Cyan, Standard Capacity	106R00676	2,000
	Toner Cartridge, Magenta, Standard Capacity	106R00677	2,000
	Toner Cartridge, Yellow, Standard Capacity	106R00678	2,000
	Toner Cartridge, Black, Standard Capacity	106R00679	3,000
	Toner Cartridge, Cyan, High Capacity	106R00680	5,000
	Toner Cartridge, Magenta, High Capacity	106R00681	5,000
	Toner Cartridge, Yellow, High Capacity	106R00682	5,000
	Toner Cartridge, Black, High Capacity	106R00684	7,000
	Waste Cartridge	106R00683	5,000
	Imaging Unit	108R00593	50,000 blk/12,500 cl
	Transfer Belt	108R00594	50,000 blk/12,500 cl
Phaser® 6110	Toner Cartridge, Cyan	106R01271	1,000
	Toner Cartridge, Magenta	106R01272	1,000
	Toner Cartridge, Yellow	106R01273	1,000
	Toner Cartridge, Black	106R01274	2,000
	Waste Toner Container	108R00722	—
	Imaging Unit	108R00744	—

**Limited inventory available. ²Declared yield in accordance with ISO/IEC 19798. Yield will vary based on image, area coverage and print mode.

Supplies/Consumables Reorder Numbers

Phaser® Equipment Supplies (continued)

Color Laser

Machine	Product	Toner Cartridge/ Ink Reorder #	Toner/Ink Yield Pages
Phaser 6115/6120	Print Cartridge, Cyan, Standard Capacity	113R00689	1,500 ²
	Print Cartridge, Yellow, Standard Capacity	113R00690	1,500 ²
	Print Cartridge, Magenta, Standard Capacity	113R00691	1,500 ²
	Print Cartridge, Black, High Capacity	113R00692	4,500 ²
	Print Cartridge, Cyan, High Capacity	113R00693	4,500 ²
	Print Cartridge, Yellow, High Capacity	113R00694	4,500 ²
	Print Cartridge, Magenta, High Capacity	113R00695	4,500 ²
	Imaging Unit	108R00691	20K Black/10K Color
Phaser 6125	Toner Cartridge, Cyan	106R1331	1,000
	Toner Cartridge, Magenta	106R1332	1,000
	Toner Cartridge, Yellow	106R1333	1,000
	Toner Cartridge, Black	106R1334	2,000
Phaser 6128	Print Cartridge, Cyan	106R01452	2,500
	Print Cartridge, Magenta	106R01453	2,500
	Print Cartridge, Yellow	106R01454	2,500
	Print Cartridge, Black	106R01455	3,100
Phaser 6130	Toner Cartridge, Cyan	106R01278	1,900
	Toner Cartridge, Magenta	106R01279	1,900
	Toner Cartridge, Yellow	106R01280	1,900
	Toner Cartridge, Black	106R01281	2,500
Phaser 6140	Toner Cartridge, Cyan	106R01477	2,000
	Toner Cartridge, Magenta	106R01478	2,000
	Toner Cartridge, Yellow	106R01479	2,000
	Toner Cartridge, Black	106R01480	2,600
Phaser 6180/6180MFP	Cyan Standard Capacity Print Cartridge	113R00719	2,000 ²
	Magenta Standard Capacity Print Cartridge	113R00720	2,000 ²
	Yellow Standard Capacity Print Cartridge	113R00721	2,000 ²
	Black Standard Capacity Print Cartridge	113R00722	3,000 ²
	Cyan High Capacity Print Cartridge	113R00723	6,000 ²
	Magenta High Capacity Print Cartridge	113R00724	6,000 ²
	Yellow High Capacity Print Cartridge	113R00725	6,000 ²
	Black High Capacity Print Cartridge	113R00726	8,000 ²

**Limited inventory available. ²Declared yield in accordance with ISO/IEC 19798. Yield will vary based on image, area coverage and print mode.

Supplies/Consumables Reorder Numbers

Phaser® Equipment Supplies (continued)

Color Laser

Machine	Product	Toner Cartridge/ Ink Reorder #	Toner/Ink Yield Pages
Phaser 6200	Toner Cartridge, Cyan, Standard Capacity	016200100	3,000
	Toner Cartridge, Magenta, Standard Capacity	016200200	3,000
	Toner Cartridge, Yellow, Standard Capacity	016200300	3,000
	Toner Cartridge, Black, Standard Capacity	016200400	3,000
	Toner Cartridge, Cyan, High Capacity	016200500	8,000
	Toner Cartridge, Magenta, High Capacity	016200600	8,000
	Toner Cartridge, Yellow, High Capacity	016200700	8,000
	Toner Cartridge, Black, High Capacity	016200800	8,000
	Imaging Unit	016201200	30,000
	Transfer Roller	108R00592	15,000
	Fuser, 110 Volt	016201400	60,000
Phaser 6250	Toner Cartridge, Cyan, Standard Capacity	106R00668	4,000
	Toner Cartridge, Magenta, Standard Capacity	106R00669	4,000
	Toner Cartridge, Yellow, Standard Capacity	106R00670	4,000
	Toner Cartridge, Black, Standard Capacity	106R00671	4,000
	Toner Cartridge, Cyan, High Capacity	106R00672	8,000
	Toner Cartridge, Magenta, High Capacity	106R00673	8,000
	Toner Cartridge, Yellow, High Capacity	106R00674	8,000
	Toner Cartridge, Black, High Capacity	106R00675	8,000
	Imaging Unit	108R00591	30,000
	Transfer Roller	108R00592	15,000
	110 Volt Fuser	115R00029	100,000
Phaser 6280	Toner Cartridge, Cyan, Standard Capacity	106R01388	2,200
	Toner Cartridge, Magenta, Standard Capacity	106R01389	2,200
	Toner Cartridge, Yellow, Standard Capacity	106R01390	2,200
	Toner Cartridge, Black, Standard Capacity	106R01391	3,000
	Toner Cartridge, Cyan, High Capacity	106R01392	5,900
	Toner Cartridge, Magenta, High Capacity	106R01393	5,900
	Toner Cartridge, Yellow, High Capacity	106R01394	5,900
	Toner Cartridge, Black, High Capacity	106R01395	7,000

**Limited inventory available. ²Declared yield in accordance with ISO/IEC 19798. Yield will vary based on image, area coverage and print mode.

Supplies/Consumables

Reorder Numbers

Phaser® Equipment Supplies (continued)

Color Laser

Machine	Product	Toner Cartridge/ Ink Reorder #	Toner/Ink Yield Pages
Phaser 6300/6350	6300/6350 Toner Cartridge, Cyan, Standard Capacity	106R01073	4,000
	6300/6350 Toner Cartridge, Magenta, Standard Capacity	106R01074	4,000
	6300/6350 Toner Cartridge, Yellow, Standard Capacity	106R01075	4,000
	6300/6350 Toner Cartridge, Black, Standard Capacity	106R01076	4,000
	6300 Toner Cartridge, Cyan, High Capacity	106R01082	7,000
	6300 Toner Cartridge, Magenta, High Capacity	106R01083	7,000
	6300 Toner Cartridge, Yellow, High Capacity	106R01084	7,000
	6300 Toner Cartridge, Black, High Capacity	106R01085	7,000
	6350 Toner Cartridge, Cyan, High Capacity	106R01144	10,000
	6350 Toner Cartridge, Magenta, High Capacity	106R01145	10,000
	6350 Toner Cartridge, Yellow, High Capacity	106R01146	10,000
	6350 Toner Cartridge, Black, High Capacity	106R01147	10,000
	6300/6350 110 Volt Fuser	115R00035	100,000
	6300/6350/6360 Imaging Unit	108R00645	35,000
6300/6350/6360 Transfer Roller	108R00646	35,000	
Phaser 6360	6360 Toner Cartridge, Cyan, Standard Capacity	106R01214	5,000
	6360 Toner Cartridge, Magenta, Standard Capacity	106R01215	5,000
	6360 Toner Cartridge, Yellow, Standard Capacity	106R01216	5,000
	6360 Toner Cartridge, Black, Standard Capacity	106R01217	9,000
	6360 Toner Cartridge, Cyan, High Capacity	106R01218	12,000
	6360 Toner Cartridge, Magenta, High Capacity	106R01219	12,000
	6360 Toner Cartridge, Yellow, High Capacity	106R01220	12,000
	6360 Toner Cartridge, Black, High Capacity	106R01221	18,000
	6300/6350/6360 Imaging Unit	108R00645	35,000
	6300/6350/6360 Transfer Roller	108R00646	35,000
	6360 110 Volt Fuser	115R00055	100,000

**Limited inventory available. ²Declared yield in accordance with ISO/IEC 19798. Yield will vary based on image, area coverage and print mode.

Supplies/Consumables Reorder Numbers

Phaser® Equipment Supplies (continued)

Color Laser

Machine	Product	Toner Cartridge/ Ink Reorder #	Toner/Ink Yield Pages
Phaser 7300	Toner Cartridge, Cyan, Standard Capacity	16197300	7,500
	Toner Cartridge, Magenta, Standard Capacity	16197400	7,500
	Toner Cartridge, Yellow, Standard Capacity	16197500	7,500
	Toner Cartridge, Black, Standard Capacity	16197600	7,500
	Toner Cartridge, Cyan, High Capacity	16197700	15,000
	Toner Cartridge, Magenta, High Capacity	16197800	15,000
	Toner Cartridge, Yellow, High Capacity	16197900	15,000
	Toner Cartridge, Black, High Capacity	16198000	15,000
	Imaging Unit, Cyan	16199300	30,000
	Imaging Unit, Magenta	16199400	30,000
	Imaging Unit, Yellow	16199500	30,000
	Imaging Unit, Black	16199600	30,000
	Imaging Unit Kit (1 of each color)	16199700	30,000/unit
	110 Volt Fuser	16199800	80,000
	Transfer Unit	16200001	80,000
Phaser 7400	Toner Cartridge, Cyan, Standard Capacity	106R01150	9,000
	Toner Cartridge, Yellow, Standard Capacity	106R01151	9,000
	Toner Cartridge, Magenta, Standard Capacity	106R01152	9,000
	Toner Cartridge, Black, High Capacity	106R01080	15,000
	Toner Cartridge, Cyan, High Capacity	106R01077	18,000
	Toner Cartridge, Yellow, High Capacity	106R01078	18,000
	Toner Cartridge, Magenta, High Capacity	106R01079	18,000
	Imaging Unit, Cyan	108R00647	30,000
	Imaging Unit, Magenta	108R00648	30,000
	Imaging Unit, Yellow	108R00649	30,000
	Imaging Unit, Black	108R00650	30,000
	Color Imaging Kit (C, M, Y)	108R00697	30,000
	Transfer Unit	101R00421	100,000
	110 Volt Fuser	115R00037	100,000
	Waste Toner Cartridge	106R01081	30,000
	Staple Refills	108R00710	15,000

**Limited inventory available. ²Declared yield in accordance with ISO/IEC 19798. Yield will vary based on image, area coverage and print mode.

Supplies/Consumables Reorder Numbers

Phaser® Equipment Supplies (continued)

Color Laser

Machine	Product	Toner Cartridge/ Ink Reorder #	Toner/Ink Yield Pages
Phaser 7500	Toner Cartridge, Cyan, Standard	106R01433	9,600
	Toner Cartridge, Magenta, Standard	106R01434	9,600
	Toner Cartridge, Yellow, Standard	106R01435	9,600
	Toner Cartridge, Cyan, High Capacity	106R01436	17,800
	Toner Cartridge, Magenta, High Capacity	106R01437	17,800
	Toner Cartridge, Yellow, High Capacity	106R01438	17,800
	Toner Cartridge, Black, High Capacity	106R01439	19,800
	Imaging Unit	108R00861	80,000
	Waste Toner Cartridge	108R00865	20,000
Phaser 7700	110 Volt Fuser	115R00061	100,000
	Toner Cartridge, Cyan, Standard	016187900	4,000
	Toner Cartridge, Magenta, Standard	016188000	4,000
	Toner Cartridge, Yellow, Standard	016188100	4,000
	Toner Cartridge, Black, Standard	016188200	5,000
	Toner Cartridge, Cyan, High Capacity	016194400	10,000
	Toner Cartridge, Magenta, High Capacity	016194500	10,000
	Toner Cartridge, Yellow, High Capacity	016194600	10,000
	Toner Cartridge, Black, High Capacity	016194700	12,000
	Print Cartridge with 4 Imaging Drums	016188300	24,000 (ea.)
	Print Cartridge	016188600	24,000
	Fuser, 110 Volt	016188700	60,000
	Waste Toner Cartridge	016189100	6,000
	Staple Pack, 3 Refills x 5000 Staples Each	016197100	15,000 Staples
	Transfer Roller	016189000	N/A
	Belt Transfer Assembly	016109400	N/A
	Accumulator Belt	016188900	N/A

**Limited inventory available. ²Declared yield in accordance with ISO/IEC 19798. Yield will vary based on image, area coverage and print mode.

Supplies/Consumables

Reorder Numbers

Phaser® Equipment Supplies (continued)

Color Laser

Machine	Product	Toner Cartridge/ Ink Reorder #	Toner/Ink Yield Pages
Phaser 7750	Toner Cartridge, Black	106R00652	32,000
	Toner Cartridge, Cyan	106R00653	22,000
	Toner Cartridge, Magenta	106R00654	22,000
	Toner Cartridge, Yellow	106R00655	22,000
	110 Volt Fuser	115R00025	60,000
	Belt Cleaner Assembly	108R00580	100,000
	Imaging Unit	108R00581	32,000
	Transfer Roller	108R00579	100,000
	Waste Cartridge	108R00575	27,000
	Staple Pack, 3 Refills x 5000 Staples Each	16197100	15,000 Staples
Phaser 7760	Toner Cartridge, Cyan	106R01160	25,000
	Toner Cartridge, Magenta	106R01161	25,000
	Toner Cartridge, Yellow	106R01162	25,000
	Toner Cartridge, Black	106R01163	32,000
	Imaging Unit	108R00713	35,000
	110 Volt Fuser	115R00049	100,000
	Waste Cartridge	108R00575	27,000
	Belt Cleaner Assembly	108R00580	100,000
	Transfer Roller	108R00579	100,000
	Staple Cartridge for the Advanced Finisher/Stacker	008R12964	5,000
	Staple Refills for 008R12964	008R12941	15,000
	Staples for the Professional Booklet Maker	008R12925	20,000

**Limited inventory available. ²Declared yield in accordance with ISO/IEC 19798. Yield will vary based on image, area coverage and print mode.

Supplies/Consumables Reorder Numbers

Phaser® Equipment Supplies

Monochrome Laser

Machine	Product	Toner Cartridge/ Ink Reorder #	Toner/Ink Yield Pages
P1210	Print Cartridge, Standard Capacity	106R00441	3,000
	Print Cartridge, High Capacity	106R00442	6,000
Phaser 3125	Print Cartridge, Standard Capacity – Phaser 3117/3122/3124/3125	106R1159	3,000
Phaser 3150	Print Cartridge, Standard Capacity	109R00746	3,500
	Print Cartridge, High Capacity	109R00747	5,000
Phaser 3200	Print Cartridge, High Capacity	113R00730	3,000
Phaser 3250	Print Cartridge, Standard Capacity	106R1373	3,500
	Print Cartridge, High Capacity	106R1374	5,000
Phaser 3300	Print Cartridge, Standard Capacity	106R01411	4,000
	Print Cartridge, High Capacity	106R01412	8,000
Phaser 3400	Print Cartridge, Standard Capacity	106R00461	4,000
	Print Cartridge, High Capacity	106R00462	8,000
Phaser 3450	Print Cartridge, Standard Capacity	106R00687	5,000
	Print Cartridge, High Capacity	106R00688	10,000
Phaser 3500	Print Cartridge, Standard Capacity	106R01148	6,000
	Print Cartridge, High Capacity	106R01149	12,000
	Phaser 3500 Repl Tray	109R00756	N/A
Phaser 3600	Print Cartridge, Standard Capacity	106R01370	7,000
	Print Cartridge, High Capacity	106R01371	14,000
Phaser 3635	Toner Cartridge, High Capacity	108R00795	10,000
	Toner Cartridge, High Capacity, TAA compliant for gov contracts	108R00977	10,000
	Toner Cartridge, Standard Capacity	108R00793	—
	Staple Cartridge	108R00823	3,000
Phaser 4400	Print Cartridge, Standard Capacity	113R00627	10,000
	Print Cartridge, High Capacity	113R00628	15,000
	110-Volt Maintenance Kit	108R00497	200,000
Phaser 4500	Print Cartridge, Standard Capacity	113R00656	10,000
	Print Cartridge, High Capacity	113R00657	18,000
	Maintenance Kit	108R00600	200,000
Phaser 4510	Print Cartridge, Standard Capacity	113R00711	10,000 ²
	Print Cartridge, High Capacity	113R00712	19,000 ²
	110-Volt Maintenance Kit	108R00717	200,000

²Limited inventory available. ²Declared yield in accordance with ISO/IEC 19798. Yield will vary based on image, area coverage and print mode.

*Obsolete products are available until current inventory is depleted.

Supplies/Consumables Reorder Numbers

Phaser® Equipment Supplies (continued)

Monochrome Laser

Machine	Product	Toner Cartridge/ Ink Reorder #	Toner/Ink Yield Pages
Phaser 5400	Print Cartridge	113R00495	20,000
	Maintenance Kit	109R00521	200,000
	Adjustable Up to Legal/Ledger Paper Tray Replacement	109R00523	—
	Adjustable Up to Letter (8 1/2 x 11 in.) Paper Tray Repl.	109R00524	—
Phaser 5500	Toner Cartridge	113R00668	30,000
	Drum Cartridge, Phaser 5500/5550	113R00670	60,000
	Staple Cartridge for the Advanced Finisher/Stacker	008R12964	5,000
	Staple Refills for 008R12964	008R12941	15,000
	110V Maintenance Kit, Phaser 5500/5550	109R00731	300,000
	Replacement Paper Tray*	109R00733	N/A
Phaser 5550	Toner Cartridge	106R01294	35,000
	Drum Cartridge, Phaser 5500/5550	113R00670	60,000
	110V Maintenance Kit, Phaser 5500/5550	109R00731	300,000
	Staple Cartridge for the Advanced Finisher/Stacker	008R12964	5,000
	Staple Refills for 008R12964	008R12941	15,000
DocuPrint® 4517/N17	Print Cartridge, DocuPrint – Obsolete*	113R00095	10,000
	110 Volt Fuser, DocuPrint – Obsolete*	108R00092	200,000
DocuPrint N24/N32/N40	Print Cartridge	113R00173	23,000
	Staple Cartridge, 3 Refills x 5000 Staples Each	108R00158	15,000 Staples
	Maintenance Kit, 110 Volt	109R00486	300,000
DocuPrint N2025/N2825	Print Cartridge – Obsolete*	113R00443	17,000
	Maintenance Kit, 110 Volt – Obsolete*	109R00481	200,000
DocuPrint N2125	Print Cartridge, Standard Capacity	113R00445	10,000
	Print Cartridge, High Capacity	113R00446	15,000
	Maintenance Kit, 110 Volt	108R00328	200,000
	Feed Roller Kit	108R00330	N/A
DocuPrint N4525	Print Cartridge	113R00195	30,000
	Staple Cartridge, 3 Refills x 5000 Staples Each	108R00158	15,000 Staples
	Adjustable Up to 11 x 17 Paper Tray	109R00504	—
	Maintenance Kit, 110 Volt	109R00048	300,000
DocuPrint P8e/P8EX	Print Cartridge – Obsolete*	113R00296	6,000

**Limited inventory available. †Declared yield in accordance with ISO/IEC 19798. Yield will vary based on image, area coverage and print mode.

*Obsolete products are available until current inventory is depleted.

Laser Printer Toner Cartridges

Color HP Printer Replacement Toner Supplies

Machine Type	Xerox Part Number	Equivalent OEM Part Number	For Use In	OEM Stated Yield	Xerox Stated Yield
LJ4600*	006R00941	C9720A – Black	Color LaserJet 4600 Series, 4650 Series	9,000•	9,000‡
LJ4600*	006R00942	C9721A – Cyan	Color LaserJet 4600 Series, 4650 Series	8,000•	8,000‡
LJ4600*	006R00943	C9722A – Yellow	Color LaserJet 4600 Series, 4650 Series	8,000•	8,000‡
LJ4600*	006R00944	C9723A – Magenta	Color LaserJet 4600 Series, 4650 Series	8,000•	8,000‡
LJ2500/LJ2800*	006R01285	C9700A/Q3960A Black	Color LaserJet 1500 Series, 2500 Series, 2550 Series, 2800 Series	5,000•	5,000•
LJ2500/LJ2800*	006R01286	C9701A/Q3961A Cyan	Color LaserJet 1500 Series, 2500 Series, 2550 Series, 2800 Series	4,000•	4,000•
LJ2500/LJ2800*	006R01287	C9702A/Q3962A Yellow	Color LaserJet 1500 Series, 2500 Series, 2550 Series, 2800 Series	4,000•	4,000•
LJ2500/LJ2800*	006R01288	C9703A/Q3963A Magenta	Color LaserJet 1500 Series, 2500 Series, 2550 Series, 2800 Series	4,000•	4,000•
LJ3500/LJ3550/ LJ3700*	006R01289	Q2670A – Black	Color LaserJet 3500 Series, 3550 Series, 3700 Series	6,000•	6,000‡
LJ3500/LJ3550*	006R01290	Q2671A – Cyan	Color LaserJet 3500 Series, 3550 Series	4,000•	4,000‡
LJ3500/LJ3550*	006R01291	Q2672A – Yellow	Color LaserJet 3500 Series, 3550 Series	4,000•	4,000‡
LJ3500/LJ3550*	006R01292	Q2673A – Magenta	Color LaserJet 3500 Series, 3550 Series	4,000•	4,000‡
LJ3700*	006R01293	Q2681A – Cyan	Color LaserJet 3700 Series	6,000•	6,000‡
LJ3700*	006R01294	Q2682A – Yellow	Color LaserJet 3700 Series	6,000•	6,000‡
LJ3700*	006R01295	Q2683A – Magenta	Color LaserJet 3700 Series	6,000•	6,000‡
LJ5500/LJ5550*	006R01313	C9730A – Black	Color LaserJet 5500 Series, 5550 Series	13,000•	13,000‡
LJ5500/LJ5550*	006R01314	C9731A – Cyan	Color LaserJet 5500 Series, 5550 Series	12,000•	12,000‡
LJ5500/LJ5550*	006R01315	C9732A – Yellow	Color LaserJet 5500 Series, 5550 Series	12,000•	12,000‡
LJ5500/LJ5550*	006R01316	C9733A – Magenta	Color LaserJet 5500 Series, 5550 Series	12,000•	12,000‡
CP4005*	006R01326	CB400A – Black	Color LaserJet CP4005 Series	7,500•	7,500‡
CP4005*	006R01327	CB401A – Cyan	Color LaserJet CP4005 Series	7,500•	7,500‡
CP4005*	006R01328	CB402A – Yellow	Color LaserJet CP4005 Series	7,500•	7,500‡
CP4005*	006R01329	CB403A – Magenta	Color LaserJet CP4005 Series	7,500•	7,500‡
LJ4700*	006R01330	Q5950A – Black	Color LaserJet 4700 Series	11,000•	11,000‡
LJ4700*	006R01331	Q5951A – Cyan	Color LaserJet 4700 Series	10,000•	10,000‡
LJ4700*	006R01332	Q5952A – Yellow	Color LaserJet 4700 Series	10,000•	10,000‡
LJ4700*	006R01333	Q5953A – Magenta	Color LaserJet 4700 Series	10,000•	10,000‡
LJ3800/LJ3600/ CP3505*	006R01338	Q6470A – Black	Color LaserJet 3800 Series, 3600 Series, CP3505 Series	6,000•	6,000‡

*Contains a Smart chip to enable Smart print functions.

‡Yields declared in accordance with ISO/IEC 19752 Standard (mono). #Yields declared in accordance with ISO/IEC 19798 Standard (color).

•Yields based on 5% toner area coverage.

Laser Printer Toner Cartridges

Color HP Printer Replacement Toner Supplies (continued)

Machine Type	Xerox Part Number	Equivalent OEM Part Number	For Use In	OEM Stated Yield	Xerox Stated Yield
LJ3600*	006R01339	Q6471A – Cyan	Color LaserJet 3600 Series	4,000•	4,000‡
LJ3600*	006R01340	Q6472A – Yellow	Color LaserJet 3600 Series	4,000•	4,000‡
LJ3600*	006R01341	Q6473A – Magenta	Color LaserJet 3600 Series	4,000•	4,000‡
LJ3800/CP3505*	006R01343	Q7581A – Cyan	Color LaserJet 3800 Series, CP3505 Series	6,000•	6,000‡
LJ3800/CP3505*	006R01344	Q7582A – Yellow	Color LaserJet 3800 Series, CP3505 Series	6,000•	6,000‡
LJ3800/CP3505*	006R01345	Q7583A – Magenta	Color LaserJet 3800 Series, CP3505 Series	6,000•	6,000‡
LJ2600/LJ1600*	006R01410	Q6000A – Black	Color LaserJet 2600 Series, 1600 Series, CM1015 Series, CM1017 Series	2,500•	2,500‡
LJ2600/LJ1600*	006R01411	Q6001A – Cyan	Color LaserJet 2600 Series, 1600 Series, CM1015 Series, CM1017 Series	2,000•	2,000‡
LJ2600/LJ1600*	006R01412	Q6003A – Magenta	Color LaserJet 2600 Series, 1600 Series, CM1015 Series, CM1017 Series	2,000•	2,000‡
LJ2600/LJ1600*	006R01413	Q6002A – Yellow	Color LaserJet 2600 Series, 1600 Series, CM1015 Series, CM1017 Series	2,000•	2,000‡
CP1215*	006R01439	CB540A – Black	Color LaserJet CP1215, CP1515, CP1518, CM1312 Series	2,200‡	2,200‡
CP1215*	006R01440	CB541A – Cyan	Color LaserJet CP1215, CP1515, CP1518, CM1312 Series	1,400‡	1,400‡
CP1215*	006R01441	CB542A – Yellow	Color LaserJet CP1215, CP1515, CP1518, CM1312 Series	1,400‡	1,400‡
CP1215*	006R01442	CB543A – Magenta	Color LaserJet CP1215, CP1515, CP1518, CM1312 Series	1,400‡	1,400‡
CP2025*	006R01485	CC530A – Black	Color LaserJet CP2025 Series, CM2320 Series	3,500‡	3,500‡
CP2025*	006R01486	CC531A – Cyan	Color LaserJet CP2025 Series, CM2320 Series	2,800‡	2,800‡
CP2025*	006R01487	CC533A – Magenta	Color LaserJet CP2025 Series, CM2320 Series	2,800‡	2,800‡
CP2025*	006R01488	CC532A – Yellow	Color LaserJet CP2025 Series, CM2320 Series	2,800‡	2,800‡
CP3525*	106R01583	CE250A – Black	Color LaserJet CP3525 Series, CM3530 Series,	5000‡	5000‡
CP3525*	106R02137	CE250X – Black	Color LaserJet CP3525 Series, CM3530 Series,	10,500‡	10,500‡
CP3525*	106R01584	CE251A – Cyan	Color LaserJet CP3525 Series, CM3530 Series,	7,000‡	7,000‡
CP3525*	106R01585	CE252A – Yellow	Color LaserJet CP3525 Series, CM3530 Series,	7,000‡	7,000‡
CP3525*	106R01586	CE253A – Magenta	Color LaserJet CP3525 Series, CM3530 Series,	7,000‡	7,000‡
CP6015*	106R02138	CB380A – Black	Color LaserJet CP6015 Series, CM6030 Series, CM6040 Series	16,500‡	16,500‡
CP6015*	106R02139	CB381A – Cyan	Color LaserJet CP6015 Series, CM6030 Series, CM6040 Series	21,000‡	21,000‡
CP6015*	106R02140	CB382A – Yellow	Color LaserJet CP6015 Series, CM6030 Series, CM6040 Series	21,000‡	21,000‡
CP6015*	106R02141	CE383A – Magenta	Color LaserJet CP6015 Series, CM6030 Series, CM6040 Series	21,000‡	21,000‡

*Contains a Smart chip to enable Smart print functions.

‡Yields declared in accordance with ISO/IEC 19752 Standard (mono). †Yields declared in accordance with ISO/IEC 19798 Standard (color).

•Yields based on 5% toner area coverage.

Laser Printer Toner Cartridges

Color HP Printer Replacement Toner Supplies (continued)

Machine Type	Xerox Part Number	Equivalent OEM Part Number	For Use In	OEM Stated Yield	Xerox Stated Yield
CP4525*	106R02185	CE260A – Black	Color LaserJet CM4540 Series, CP4025 Series, CP4525 Series	8,500†	8,500‡
CP4525*	106R02220	CE260X – Black	Color LaserJet CP4525 Series	17,000†	17,000‡
CP4525*	106R02217	CE261A – Cyan	Color LaserJet CP4025 Series, CP4525 Series	11,000†	11,000‡
CP4525*	106R02218	CE263A – Magenta	Color LaserJet CP4025 Series, CP4525 Series	11,000†	11,000‡
CP4525*	106R02219	CE262A – Yellow	Color LaserJet CP4025 Series, CP4525 Series	11,000†	11,000‡
CP1525*	106R02221	CE320A – Black	Color LaserJet CP1525, CM1415 Series	2,000†	2,000‡
CP1525*	106R02222	CE323A – Magenta	Color LaserJet CP1525, CM1415 Series	1,300†	1,300‡
CP1525*	106R02223	CE321A – Cyan	Color LaserJet CP1525, CM1415 Series	1,300†	1,300‡
CP1525*	106R02224	CE322A – Yellow	Color LaserJet CP1525, CM1415 Series	1,300†	1,300‡

*Contains a Smart chip to enable Smart print functions.

†Yields declared in accordance with ISO/IEC 19752 Standard (mono). ‡Yields declared in accordance with ISO/IEC 19798 Standard (color).

•Yields based on 5% toner area coverage.

Laser Printer Toner Cartridges

Black HP, Apple Printer Replacement Toner Supplies

Machine Type	Xerox Part Number	Equivalent OEM Part Number	For Use In	OEM Stated Yield	Xerox Stated Yield
PX	006R00899	92274A M2045GA	LaserJet 4L, 4ML, 4MP, 4P Apple Personal LaserWriter 300, 320	3,350•	3,600•
EX	006R00903	92298A M2473G/A	LaserJet 4/4+ Series, 5 Series Apple LaserWriter 16/600, Pro 600, 630	6,800•	7,300•
EX Extended Yield	006R00904	92298X M273G/A	LaserJet 4/4+ Series, 5 Series Apple LaserWriter 16/600, Pro 600, 630	8,800•	9,800•
VX	006R00905	C3903A	LaserJet 5 Series, 6 Series	4,000•	4,000•
WX	006R00906	C3909A	LaserJet 8000, 5si Series	15,000•	16,500•
AX	006R00908	C3906A	5L, 6L, 3100, 3150 Series	2,500+	2,500+
62X	006R00925	C4129X	LaserJet 5000 Series, 5100 Series	10,000+	10,000+
52X	006R00926	C4127X	LaserJet 4000 Series, 4050 Series	10,000+	10,000+
22X	006R00927	C4092A	LaserJet 1100 Series, 3200 Series	2,500+	2,500+
32X	006R00928	C4096A	LaserJet 2100 Series, 2200 Series	5,000+	5,000+
72X	006R00929	C4182X	LaserJet 8100 Series, 8150 Series	20,000+	20,000•
LJ1200	006R00932	C7115X	LaserJet 1200 Series, 1220 Series, 3300, 3310, 3320 Series, 3330, 3380	3,500+	3,500+
LJ4100	006R00933	C8061X	LaserJet 4100 Series	10,000+	10,000+
LJ4200*	006R00934	Q1338A	LaserJet 4200 Series	12,000+	13,200+
LJ4300/M4345*	006R00935	Q1339A Q5945A	LaserJet 4300 Series, M4345 Series	18,000+	19,800•
LJ2300*	006R00936	Q2610A	LaserJet 2300 Series	6,000+	6,600+
LJ1150	006R00956	Q2624X	LaserJet 1150	4,000+	4,000+
LJ1300	006R00957	Q2613X	LaserJet 1300 Series	4,000+	4,000+
LJ9000*	006R00958	C8543X	LaserJet 9000 Series, 9040mfp, 9050mfp	30,000+	33,000+
LJ4250/LJ4350*	006R00959	Q5942X	LaserJet 4250 Series, 4350 Series	20,000+	22,000+
LJ1160/LJ1320/ LJ3390*	006R00960	Q5949A	LaserJet 1160, 1320 Series, 3390	2,500+	3,500+
LJ2420*	006R00961	Q6511X	LaserJet 2420 Series, 2430 Series	12,000+	12,000+
LJ1320/LJ3390*	006R01320	Q5949X	LaserJet 1320 Series, 3390	6,000+	6,000+
P2015/M2727*	006R01387	Q7553X	LaserJet P2015 Series, M2727	7,000+	7,000+
P3005/M3027/ M3035*	006R01388	Q7551X	LaserJet P3005 Series, M3027 Series, M3035 Series	13,000+	13,000+
LJ5200*	006R01389	Q7516A	LaserJet 5200 Series	12,000+	12,000+

*Contains a Smart chip to enable Smart print functions.

†Yields declared in accordance with ISO/IEC 19752 Standard (mono). •Yields declared in accordance with ISO/IEC 19798 Standard (color).

•Yields based on 5% toner area coverage.

Laser Printer Toner Cartridges

Black HP, Apple Printer Replacement Toner Supplies (continued)

Machine Type	Xerox Part Number	Equivalent OEM Part Number	For Use In	OEM Stated Yield	Xerox Stated Yield
LJ1010	006R01414	Q2612A	LaserJet 1012, 1018, 1020, 1022 Series, 3015, 3020, 3030, 3050, 3052, 3055, M1319f	2,000+	2,000+
P1006*	006R01429	CB435A	LaserJet P1005, P1006	1,500+	1,500+
P1505*	006R01430	CB436A	LaserJet P1505 Series, M1522 Series	2,000+	2,000+
P4015*	006R01443	CC364A	LaserJet P4014 Series, 4015 Series, 4515 Series	10,000+	10,000+
P4015*	006R01444	CC364X	LaserJet P4015 Series, P4515 Series	24,000+	24,000+
P2035/P2055*	006R01489	CE505A	LaserJet P2035 Series, P2055 Series	2,300+	2,300+
P2055*	006R01490	CE505X	LaserJet P2055 Series	6,500+	6,500+
P3015*	106R01621	CE255A	LaserJet P3015 Series	6,000+	6,000+
P3015*	106R01622	CE255X	LaserJet P3015 Series	12,500+	12,500+
P1606*	106R02157	CE278A	P1606, M1536, P1566	2,100+	2,100+
P1102*	106R02156	CE285A	LaserJet Pro P1102 Series, M1130 Series, M1212, M1213, M1214, M1216, M1217, M1219	1,600+	1,600+

*Contains a Smart chip to enable Smart print functions.

+Yields declared in accordance with ISO/IEC 19752 Standard (mono). *Yields declared in accordance with ISO/IEC 19798 Standard (color).

•Yields based on 5% toner area coverage.

Brother Laser Printer Replacement Toner and Drum Cartridges

Machine Type	Xerox Part Number	Equivalent OEM Part Number	For Use In	OEM Stated Yield	Xerox Stated Yield
HL-2040	006R01415	TN350	Fax-2820/Fax-2910/Fax-2920/HL-2040/	2,500•	2,500•
	006R01416	DR350	HL-2070N/DCP-7020/MFC-7220/MFC-7225N/ MFC-7420/MFC-7820N	12,000	12,000
HL-5250	006R01417	TN550	DCP-8060/DCP-8065DN/HL-5240	3,500•	3,500•
	006R01418	TN580	HL-5250 Series/HL-5280W/MFC-8460N	7,000•	7,000•
	006R01419	DR520	MFC-8660DN/MFC-8670DN/MFC-8860DN MFC-8870DW	25,000	25,000
HL-1240	006R01420	TN430	DCP-1200/DCP-1400/Fax-4100/Fax-4100e/Fax-4750/ Fax-4750e/Fax-5750/Fax-5750e/HL-1230/HL-1240/ HL-1250/HL-1270N/HL-1435/HL-1440/HL-1450/ HL-1470N/MFC-8300/MFC-8500/MFC-8600/ MFC-8700/MFC-9600/MFC-9700/MFC-9800/ MFC-P2500	3,000•	3,000•
	006R01421	TN460		6,000•	6,000•
	006R01422	DR400		20,000	20,000
HL-5140	006R01423	TN540	DCP-8040/DCP-8045D/HL-5140/HL-5150D/ HL-5150DLT/HL-5170DN/HL-5170DNLT/MFC-8120/ MFC-8220/MFC-8440/MFC-8640D/MFC-8840D/ MFC-8840DN	3,500•	3,500•
	006R01424	TN570		6,700•	6,700•
	006R01425	DR510		20,000	20,000

•Yields based on 5% toner area coverage.

Laser Printer Toner Cartridges

Lexmark Laser Printer Replacement Cartridges

Machine Type	Xerox Part Number	Equivalent OEM Part Number/ Lexmark Return Program Number	For Use In	OEM Stated Yield	Xerox Stated Yield
E230, E232, E234, E240, E330, E340, E332, E342	106R01549	24035SA/24015SA	Laser Printer E230, E232, E234, E240, E330, E340, E332, E342	2,500+	2,500+
E450	106R01550	E450A21A/E450A11A	Laser Printer E450	6,000+	6,000+
E450	106R01551	E450H21A/E450H11A	Laser Printer E450	11,000+	11,000+
E250, E350, E352	106R01552	E250A21A/E250A11A	Laser Printer E250, E350, E352	3,500+	3,500+
E350, E352	106R01553	E352H21A/E352H11A	Laser Printer E350, E352	9,000+	9,000+
T420	106R01554	12A7315/12A7415	Laser Printer T420	10,000+	10,000+
T520, T522	106R01555	12A6735/12A6835	Laser Printer T520, T522, X520, X522	20,000+	20,000+
T620, T622	106R01556	12A6765/12A6865	Laser Printer T620, T622, X620	30,000+	30,000+
T630, T632, T634	106R01557	12A7362/12A7462	Laser Printer T630, T632, T634, X630, X632, X634	21,000+	21,000+
T632, T634	106R01558	12A7365/12A7465	Laser Printer T632, T634, X632, X634	32,000+	32,000+
T644	106R01559	64435XA/64415XA	Laser Printer T644	32,000+	32,000+
E120	106R01560	12035SA/12015SA	Laser Printer E120	2,000+	2,000+
T430	106R01561	12A8325/12A8425	Laser Printer T430	12,000+	12,000+
T640, T642, T644	106R01562	64035HA/64015HA	Laser Printer T640, T642, T644	21,000+	21,000+
T610, T614, T616	106R02135	12A5740/12A5840	Laser Printer Optra T610, T612, T614, T616	10,000•	10,000•
T610, T614, T616	106R02136	12A5745/12A5845	Laser Printer Optra T610, T612, T614, T616	25,000•	25,000•

*Contains a Smart chip to enable Smart print functions.

†Yields declared in accordance with ISO/IEC 19752 Standard (mono). •Yields declared in accordance with ISO/IEC 19798 Standard (color).

•Yields based on 5% toner area coverage.

Reprographic Media Performance Chart

Equipment Model	Bonds				
	Premium	Performance	Color Bond	24 lb Performance	Translucent Bond
2510	◆	◆	◆	◆	●5
2515	◆	◆	◆	◆	●5
2520	◆	◆	◆	◆	●5
3001	◆	◆	◆	◆	●5
3030/3040/3050/3060	◆	◆	◆	◆	●5
3080	◆	◆	◆	◆	●5
3090	◆	◆	◆	◆	●5
5080	◆	◆	◆	◆	●5
7080/85	◆	◆	◆	◆	●5
8180	◆	◆	◆	◆	●5
8810/12	◆	◆	◆	◆	●5
8825/8830	◆	◆	◆	◆	●5
8836	◆	◆	◆	◆	●5
8840C	◆	◆	◆	◆	●5
8840D	◆	◆	◆	◆	●5
8845	◆	◆	◆	◆	●5
8855	◆	◆	◆	◆	●5
MAX200	◆	◆	◆	◆	●5
8850	◆	◆	◆	◆	●5
721P	◆	◆	◆	◆	●5
6030/6050A	◆	◆	◆	◆	●5
6204	◆	◆	◆	◆	●5
510dp	◆	◆	◆	◆	●5
990	◆	◆	◆	◆	●5
Pen Plotters	◆	◆	◆	◆	●5
Manual Drafting	◆	◆	◆	◆	●5
OCÉ 9800	◆	◆	◆	◆	●5
Archivability	>100 years	>100 years	>100 years	>100 years	>50 years

- ◆ = Excellent Performance
- = Good Performance
- ▲ = Not Recommended or Supported (May work, but not to Xerox Standards)

1. N/A
2. Use manual by-pass or single sheet feed only for this media.
3. Feed may be improved with use of backing sheet.
4. Printer with stackers must be attended during film use.
5. Extreme high humidity may result in wrinkled prints.
6. Bow wave may occur on some machines.
7. Use manual by-pass only with this media.

Reprographic Media Performance Chart

Vellums			Films	
Premium Vellum	Performance Vellum	Production Vellum	4-Mil Zero Solvent AccuImage Elite	Never Tear
◆	◆	◆	◆	●
◆	◆	◆	◆	▲3
◆	◆	◆	◆	▲3
◆	◆	◆	◆	▲3
◆	◆	◆	◆	▲
◆	◆	◆	◆	◆
◆	◆	◆	◆	◆
◆	◆	◆	◆	◆
◆	◆	◆	▲	▲
◆	◆	◆	◆2	◆2
◆	◆	◆	◆2	●2
◆	◆	◆	●	●2
◆	◆	◆	◆	▲
◆	◆	◆	◆2, 4	●2, 4
◆	◆	◆	◆4	●4
◆	◆	◆	◆	▲
◆	◆	◆	◆	●
◆	◆	◆	◆	●
◆	◆	◆	◆	●
◆	◆	◆	◆	●
◆	◆	◆	◆	●
◆	◆	◆	◆	●
◆	◆	◆	◆	●
◆	◆	◆	◆	●
◆	◆	◆	◆	●
◆	◆	◆	◆	●
◆	◆	◆	◆	▲
●	●	●	◆	▲
▲	▲	▲	1	1
>200 years	>200 years	>200 years	>500 years	>500 years



Xerox® Replacement Cartridges for Laser Printers and Premium Laser Paper A Perfect Combination

Create a quality pairing for your laser printer with Xerox® cartridges and Xerox® Premium Laser paper. Before we put our name on our HP, Lexmark and Brother replacement cartridges, we ensure they measure up to the Original Equipment Manufacturer standards. And, with industry expertise behind all our products, both our replacement cartridges and Xerox® Premium Laser paper meet and exceed Xerox standards.

For savings, value, performance and superb quality products for all your laser printers, ask for Xerox® replacement cartridges and Xerox® Premium Laser paper.



©2011 Xerox Corporation. All Rights Reserved. XEROX® and XEROX and Design® are trademarks of Xerox Corporation in the United States and/or other countries. 06/11 T151

Xerox® MySupplies

Dynamic. Interactive. Efficient.

Xerox e-Business takes online engagement with customers further by providing fast, simple ways for you to purchase Xerox® supplies.

MySupplies is just one example of the easy-to-use services designed to help you save time, simplify business and improve productivity.

As a MySupplies user, you can purchase Xerox® supply products online at your company's unique negotiated price plan. You can also view shipping and billing information and use our quick reorder feature to make purchases based on your company's buying history. MySupplies provides a complete Xerox® catalog that is always up to date and accessible 24 hours a day, seven days a week. To make buying decisions even easier, MySupplies also enables you to:

- Search to find the correct supplies for your Xerox® equipment
- Use the Paper Resource Centre to find tips and templates to enhance productivity through the use of Xerox® supplies
- Create and save an online "My Favorites" shopping list of your most frequently ordered supply products to simplify reorders

Along with the convenience of ordering online, you can rest assured that all transactions and information are encrypted to protect your privacy.



For more information, contact your Xerox Supplies Representative, an authorized Xerox Reseller, call toll free or visit us at www.xerox.com

In the U.S. call 1-800-822-2200

In Canada call 1-800-668-0199

©2012 Xerox Corporation. All Rights Reserved. XEROX®, XEROX and Design®, AccordionPix®, C20®, ColorQube®, ColorStix®, Color Xpressions®, CopyCentre®, Digital Color Elite Gloss®, Digital Color Elite Silk®, Digital Color Select Gloss®, DocuCard®, DocuColor®, Document Centre®, DocuPac®, DocuPrint®, DuraPaper®, EverFlat Image Solutions Paper®, FaxCentre®, FunFlip®, iGen3®, iGen4®, N2025®, N2125®, N2825®, P1210®, Phaser®, Ring Tuff®, SportsPix®, SquareFold®, WorkCentre®, Xerox Nuvera®, 1010®, 1050®, 1065®, 1090®, 2101®, 2510®, 3001®, 3030®, 3050®, 3060®, 4050®, 4090®, 4110®, 4112®, 4118®, 4127®, 4135®, 4235®, 4590®, 4595®, 4635®, 4850®, 4890®, 495®, 5018®, 5021®, 5028®, 5034®, 5053®, 5065®, 5080®, 5090®, 5100®, 5328®, 5335®, 5337®, 5340®, 5343®, 5350®, 5365®, 5380®, 5388®, 5390®, 5614®, 5624®, 5626®, 5680®, 5800®, 5837®, 5845C®, 5855C®, 5885®, 5890®, 5895®, 5900®, 5990®, 5995®, 6030®, 6050®, 6050A®, 6180®, 6204®, 6279®, 6400®, 650/1300®, 7085®, 8142®, 8160®, 8254®, 8264E®, 8265®, 8290®, 8365®, 8390®, 8825 DDS®, 8830® and Color Impressions™ are registered trademarks of or licensed to Xerox Corporation in the United States and/or other countries. 09/12 SP2CT-01UA WILSC-153 BR548

